



**Ohio Modern:**  
*Preserving Our Recent Past  
Cleveland and Cuyahoga County  
Survey Report*

**PREPARED FOR:**

State Historic Preservation Office  
Ohio History Connection  
800 E. 17th Avenue  
Columbus, Ohio 43211

**PREPARED BY:**

Gray & Pape, Inc.  
1318 Main Street  
Cincinnati, Ohio 45202

**GRAY & PAPE**  
HERITAGE MANAGEMENT

16-39601.001





# GRAY & PAPE

## HERITAGE MANAGEMENT

16-39601.001

### Ohio Modern: Preserving Our Recent Past Cleveland and Cuyahoga County Survey Report

**Prepared for:**

State Historic Preservation Office  
Ohio History Connection  
800 East 17<sup>th</sup> Avenue  
Columbus, Ohio 43211

**Prepared by:**

Gray & Pape, Inc.  
1318 Main Street  
Cincinnati, Ohio 45202

Jennifer Burden, M.S.H.P., Principal Investigator  
Ryan Van Dyke, M.A., Principal Investigator  
Kendal Anderson, M.A., Architectural Historian  
Danielle Kauffmann, M.S.H.P., Architectural Historian  
Deqah Hussein-Wetzel, M.S.H.P., Architectural Historian

---

Brandon McCuin, M.H.P.  
History/Architecture Practice Leader  
December 1, 2017



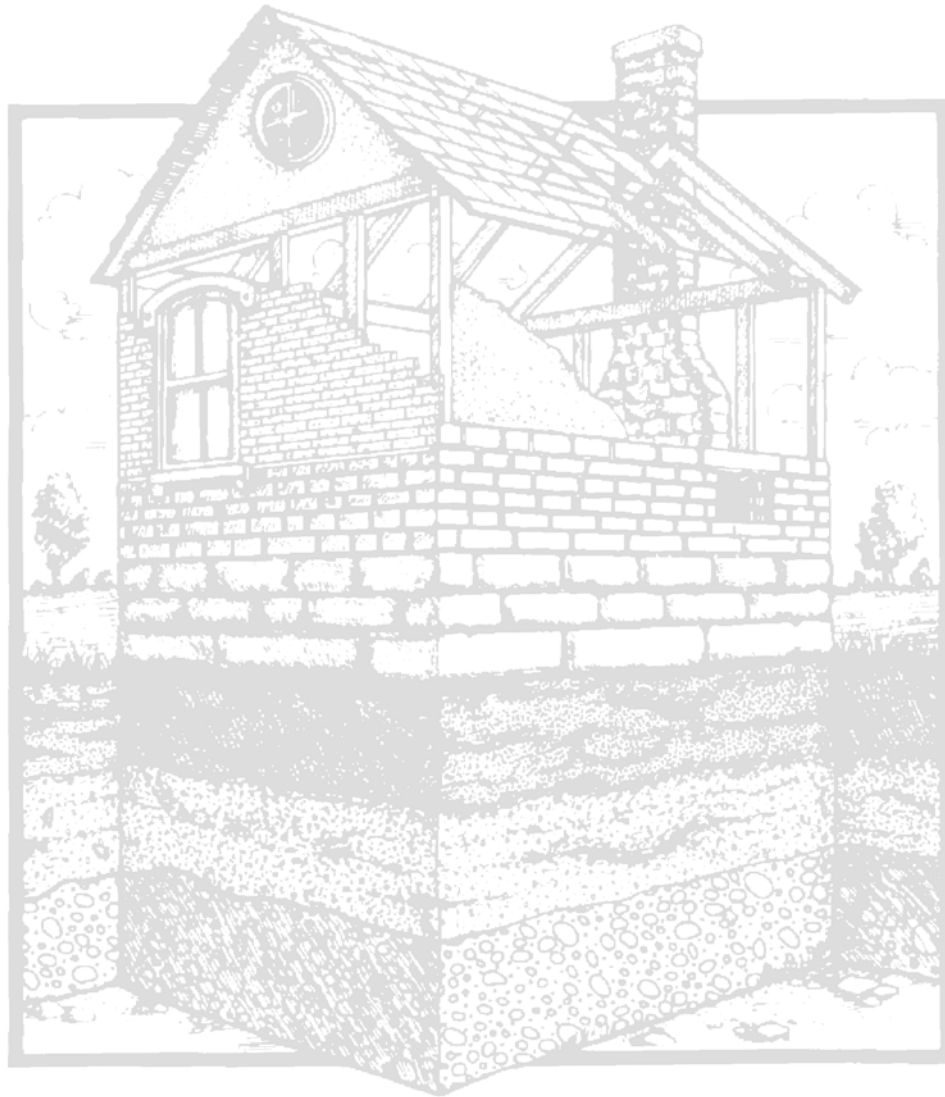
## **ACKNOWLEDGEMENTS**

This report is based upon work assisted by a grant from the U.S. Department of the Interior, National Park Service. Any opinions, findings and conclusions or recommendations expressed in this report are those of the author(s) and do not necessarily reflect the views of the Department of the Interior.

This project was made possible in part by a grant from the U.S. Department of the Interior's Historic Preservation Fund, administered by the Ohio History Connection, State Historic Preservation Office. U.S. Department of the Interior regulations prohibit unlawful discrimination in departmental federally assisted programs on the basis of race, national origin, age or disability. Any person who believe he or she has been discriminated against in any program, activity or facility operated by a recipient of Federal assistance should write to Office of Equal Opportunity, U.S. Department of the Interior, National Park Service, 1849 C Street, NW, Washington, D.C. 20240.



with support from  
the Historic Preservation Fund  
and the State Historic Preservation Office



*This page intentionally left blank.*

Consulting Team:

Gray & Pape, Inc. team members from the History/Architecture Practice who contributed to the resource survey and Historic Context, include:

Jennifer Burden, M.S.H.P., Principal Investigator  
Danielle Kauffmann, M.S.H.P., Architectural Historian  
Ryan Van Dyke, M.A., Principal Investigator  
Kendal Anderson, M.A., Architectural Historian  
Deqah Hussein-Wetzel, M.S.H.P, Architectural Historian  
Donald Burden, M.S.H.P., Principal Investigator, formerly of Gray & Pape, Inc.

Mallory Fowler, History/Architecture Intern  
Sarah Holland, PhD, Technical Editor  
Ruth Myers, GIS Specialist

Support for the project was provided by the Ohio State Historic Preservation Office staff, including:

Amanda Terrell, Division Director, Deputy State Historic Preservation Officer  
Barbara Powers, Department Head, Inventory & Registration  
Ross Nelson, Survey and National Register Manager  
Megan Rupnik, Survey and National Register Manager  
Carrie Simmons, Technical Assistant  
Susan Tietz, Survey and National Register Manager  
Nancy Parsons, Database Manager

Additional support including, interview subjects and identification of resources to be inventoried, provided by:

Jack Bialosky, Sr.  
Jack Bialosky, Jr.  
David Ellison  
Richard Fleischman  
Nina and Jim Gibans  
Phil Hart  
Jud Kline  
Laura Peskin  
Peter Van Dijk



*This page intentionally left blank.*



# TABLE OF CONTENTS

Acknowledgements .....	i
TABLE OF CONTENTS.....	iii
LIST OF FIGURES .....	vi
LIST OF TABLES .....	viii
List of Plates.....	viii
1.0 Introduction.....	1
2.0 Research Design and Methods.....	4
2.1 Research Design.....	4
2.2 Research Methods .....	5
3.0 Cuyahoga County Environmental Setting .....	7
3.1 Topography of Cuyahoga County .....	7
4.0 Early History of Cleveland and Cuyahoga County .....	8
4.1 Pre-1940 History of Cleveland and Cuyahoga County.....	8
5.0 Agriculture.....	14
5.1 Introduction .....	14
5.2 Mid-Century Cuyahoga Valley Agricultural Issues .....	15
5.3 Agriculture Conclusion and Survey Results.....	16
6.0 Commerce .....	17
6.1 Introduction .....	17
6.2 Pre-1940 Commercialism in the US.....	17
6.3 Mid-Century Commercial Building History.....	17
6.4 Commercial Resources Identified During Survey .....	21
6.5 Commerce Conclusion and Survey Results .....	29
7.0 Education.....	31
7.1 Introduction .....	31
7.2 Mid-Century Education Issues in Cuyahoga County.....	31
7.3 City of Cleveland School District Buildings .....	34
7.4 Suburban School Buildings .....	35
7.5 Vocational Schools .....	36
7.6 Parochial Schools.....	37
7.7 Colleges/Universities .....	38
7.8 Education Conclusion and Survey Results.....	40
8.0 Ethnic/Immigration.....	47
8.1 Introduction .....	47
8.2 Eastern European Immigration .....	47
8.3 Hispanics.....	51
8.4 Eastern Asians.....	52

8.5 Conclusion .....	53
8.6 Ethnic/Immigration Survey Results.....	53
8.7 Further Survey Recommendations .....	58
9.0 Industrial/Manufacturing .....	59
9.1 Introduction .....	59
9.2 Iron and Steel Industry .....	59
9.3 Machine Tool Industry .....	61
9.4 Automotive Industry .....	62
9.5 Chemical Industry.....	64
9.6 Conclusion .....	65
9.7 Industrial/Manufacturing Survey Results .....	65
9.8 Further Survey Recommendations .....	69
10.0 Military/Defense .....	70
10.1 Introduction .....	70
10.2 World War II & Manufacturing .....	70
10.3 Civilian Defense .....	71
10.4 Military Hospitals.....	72
10.5 Aviation .....	72
10.6 NASA .....	74
10.7 US Coast Guard .....	75
10.8 Military Survey Results and Recommendations .....	76
11.0 Political/Social Welfare .....	77
11.1 Introduction .....	77
11.2 Local Social Organizations .....	77
11.3 Wartime Workers in Cuyahoga County.....	79
11.4 Temporary and Semi-Permanent Public Housing.....	80
11.5 Urban Renewal .....	81
11.6 Civil and Political Unrest.....	85
11.7 Conclusion .....	87
11.8 Political/Social Welfare Survey Results .....	88
11.9 Survey Recommendations .....	92
12.0 Religion/Ecclesiastical Groups .....	93
12.1 Introduction .....	93
12.2 Religion in Suburbia .....	94
12.3 Modern Architecture & Religion.....	95
12.4 Survey Results.....	98
12.5 Survey Recommendations .....	103

13.0 Arts and Recreation .....	104
13.1 Introduction .....	104
13.2 Suburban Drive-In Theaters.....	104
13.3 Mall Cinemas .....	104
13.4 Parks and Recreation .....	105
13.5 Golf Courses .....	106
13.6 Bowling .....	107
13.7 YMCAs.....	109
13.8 Professional Sports .....	110
13.9 Conclusion .....	112
13.10 Survey Recommendations .....	116
14.0 Transportation .....	117
14.1 Introduction .....	117
14.2 Mass Transit.....	117
14.3 Highways.....	118
14.4 Other Major Roadways.....	120
14.5 Airports.....	121
14.6 Conclusion .....	122
14.7 Survey Results.....	122
14.8 Survey Recommendations .....	125
15.0 Suburban Development.....	126
15.1 Introduction .....	126
15.2 Early Suburban Development .....	126
15.3 Suburban Development & Segregation .....	127
15.4 Suburban Development 1940-1976.....	130
15.5 Local Developers.....	130
15.6 Prefabricated Homes .....	132
15.7 Suburban Conflicts.....	133
15.8 Continued Evolution of Suburban Areas.....	134
15.9 Survey Results.....	135
16.0 Area Histories .....	144
16.1 Introduction .....	144
16.2 Bay Village.....	144
16.3 Bedford .....	144
16.4 Bedford Heights .....	145
16.5 Berea .....	145
16.6 Brooklyn .....	146

16.7 Brook Park.....	146
16.8 Cleveland Heights.....	146
16.9 Euclid.....	147
16.10 Fairview Park.....	147
16.11 Garfield Heights.....	147
16.12 Lakewood.....	148
16.13 Lyndhurst.....	148
16.14 Maple Heights.....	148
16.15 Middleburg Heights.....	149
16.16 North Olmsted.....	149
16.17 North Royalton.....	150
16.18 Olmsted Falls.....	150
16.19 Parma.....	150
16.20 Parma Heights.....	151
16.21 Rocky River.....	151
16.22 Seven Hills.....	152
16.23 Solon.....	152
16.24 Strongsville.....	152
16.25 University Heights.....	152
16.26 Warrensville Heights.....	153
16.27 Westlake.....	153
17.0 Survey Methods, Results, and Recommendations.....	154
17.1 Survey Methodology.....	154
17.2 Survey Results.....	154
17.3 National Register of Historic Places Recommendations.....	158
18.0 References Cited.....	175

Appendix A: Surveyed Resources by Ohio Historic Inventory Numbers

Appendix B: Known Architects and Builders of Surveyed Resources

## **LIST OF FIGURES**

Figure 1-1. Map of Cuyahoga County.....	2
Figure 1-2. Building Construction by Decade – Through 2010 Cuyahoga County, Ohio.....	3
Figure 5-1. 1964 Cuyahoga County Fair scene (Cleveland Press Collection, Michael Schwartz Library, Cleveland State University).....	16
Figure 6-1. 1957 aerial of May’s on-the-Heights, (Cleveland Press Collection, Michael Schwartz Library, Cleveland State University).....	18

Figure 6-2. 1960 aerial of Parma Shoppes, then known as Parmatown (Cleveland Press Collection, Michael Schwartz Library, Cleveland State University) .....	19
Figure 6-3. 1963 aerial of Severance Town Center, showing its original configuration (Cleveland Press Collection, Michael Schwartz Library, Cleveland State University). .....	20
Figure 6-4. 1963 interior view of Severance Town Center (Cleveland Press Collection, Michael Schwartz Library, Cleveland State University).....	20
Figure 7-1. 1978 anti-busing demonstration (Cleveland Press Collection, Michael Schwartz Library, Cleveland State University).....	34
Figure 7-2. 1967 aerial of Rocky River with I-90 on the left and Rocky River High School on the right (Cleveland Press Collection, Michael Schwartz Library, Cleveland State University). .....	35
Figure 7-3. Students at Aviation High School in 1980 (Cleveland Press Collection, Michael Schwartz Library, Cleveland State University).....	37
Figure 7-4. 1973 aerial view of CSU campus with work underway on new buildings (Cleveland Press Collection, Michael Schwartz Library, Cleveland State University). .....	39
Figure 8-1. 1961 dedication of Lesva Ukrainia statue in Ukrainian Cultural Gardens (Cleveland Press Collection, Michael Schwartz Library, Cleveland State University). .....	49
Figure 8-2. 1939 procession at the Ukrainian Cultural Gardens (Cleveland Press Collection, Michael Schwartz Library, Cleveland State University). .....	49
Figure 9-1. 1956 Street scene from the Tremont area; most of this area was razed for interstate development (Cleveland Press Collection, Michael Schwartz Library, Cleveland State University) .....	61
Figure 9-2. Auto assembly line at the Fisher Body Plant in Euclid (Cleveland Press Collection, Michael Schwartz Library, Cleveland State University). .....	63
Figure 9-3. 1951 construction of Ford’s Brook Park Plant (Cleveland Press Collection, Michael Schwartz Library, Cleveland State University).....	64
Figure 10-1. Nike site along Lake Erie in 1961 (Cleveland Press Collection, Michael Schwartz Library, Cleveland State University).....	72
Figure 10-2. 1964 aerial view of US Coast Guard Cleveland Harbor Station (Michael Schwartz Library, Cleveland State University).....	75
Figure 11-1. Valleyview Homes, 1940 (Cleveland Press Collection, Michael Schwartz Library, Cleveland State University). .....	79
Figure 11-2. 1955 view of the Cedar Apartments Extension urban renewal project (Cleveland Press Collection, Michael Schwartz Library, Cleveland State University). .....	82
Figure 11-3. Clean up efforts after the Hough Riots (Cleveland Press Collection, Michael Schwartz Library, Cleveland State University).....	87
Figure 12-1. Our Lady of Perpetual Help Catholic Church, now St. Casimir on Neff Rd. (Cleveland Press Collection, Michael Schwartz Library, Cleveland State University). .....	95
Figure 12-2. Altar wall in St. Gregory the Great Catholic Church in South Euclid (Cleveland Press Collection, Michael Schwartz Library, Cleveland State University) .....	98
Figure 13-1. View of Parmatown Lanes (no longer extant), Parma (Cleveland Press Collection, Michael Schwartz Library, Cleveland State University). .....	109
Figure 13-2. Inaugural Cleveland Cavaliers basketball team coached by Bill Fitch (Cleveland Press Collection, Michael Schwartz Library, Cleveland State University). .....	111
Figure 14-1. 1952 aerial of the construction of Willow Freeway (Cleveland Press Collection, Michael Schwartz Library, Cleveland State University). .....	119
Figure 14-2. 1952 Aerial view of the I-77 and I-90 interchange (Cleveland Press Collection, Michael Schwartz Library, Cleveland State University). .....	120
Figure 14-3. Expansion work underway at Burke Airport in 1956 (Cleveland Press Collection, Michael Schwartz Library, Cleveland State University). .....	121

Figure 15-1. 1969 overview of development in Shaker Heights (Cleveland Press Collection, Michael Schwartz Library, Cleveland State University). ..... 128

Figure 15-2. 1959 construction of a residential development in Bedford (Cleveland Press ..... 135

Figure 17-1. Cuyahoga County Modern Period Resources Previously Documented in the Ohio Historic Inventory and the National Register of Historic Places..... 156

Figure 17-2. Properties Surveyed for the Ohio Modern - Cuyahoga County Survey. .... 157

## LIST OF TABLES

Table 1. Surveyed Commercial Buildings..... 30

Table 2. Approximate number of immigrants in Cleveland, 1940-1970. .... 47

Table 3. Types of surveyed industrial resources ..... 66

Table 4. Cleveland’s Black Population v. Total Population between 1900 and 1970 by Decade ..... 79

Table 5. City of Cleveland Population vs. Population of Cuyahoga County Suburbs 1940-1970... 130

Table 6. Religious Buildings Recommended as Potentially Eligible for Listing in the National Register for Architectural Significance..... 165

Table 7. Surveyed Subdivisions and their Character-Defining Features..... 169

## LIST OF PLATES

Plate 1. Greendale Road within the Northwood Acres Subdivision, Maple Heights..... 6

Plate 2. Puritas Plaza Shopping Center (CUY 1146208), constructed in 1959, 14025 Puritas Ave., Puritas-Longmead. The Family Dollar store on the right originally housed an A&P supermarket. Grocery stores were commonly found in shopping centers during the modern period. .... 22

Plate 3. Euclid Square Mall (CUY 1104522), constructed in 1976, Euclid. Currently mostly vacant with no remaining retail stores; however, this former anchor store end retains its original entry columns. 23

Plate 4. Former Halle’s Brothers Department Store branch (CUY 1140715), constructed in 1956, Middleburg Heights. This was the only former branch store identified during survey. .... 24

Plate 5. Small retail store (CUY 1134624), constructed in 1964, 20508 Southgate Park Blvd., Maple Heights. The building retains most original materials. .... 25

Plate 6. Severance Medical Arts Building (CUY 1134022), constructed in 1966, 5 Severance Cir., Cleveland Heights. The building was constructed shortly after the Severance Center Mall on the same large parcel..... 25

Plate 7. MJ Building (CUY 1145417), constructed in 1956, 6020 State Rd., Parma. The building was advertised as ideal for small medical offices, and currently houses law and accountant offices. .... 26

Plate 8. Former Park View Federal Savings & Loan Association building (CUY 1133824), constructed in 1960, 25350 Rockside Rd., Bedford Heights. The building was a bank into the 1990s; drive-thru windows are extant on the opposite wall. .... 27

Plate 9. Former Golden Point Drive-In franchise restaurant, now retail store, (CUY 1141717), constructed ca. 1960, 7467 Memphis Ave., Brooklyn. The building’s small footprint and unusual, A-frame design suggested it was originally constructed for another use. .... 27

Plate 10. Former location of Jolly Roger Donuts, and most recently a seafood restaurant, but currently vacant (CUY 1130124), constructed in 1958, 5145 Northfield Road, Bedford Heights. .... 28

Plate 11. Commercial building (CUY 1120611), constructed in 1950, 512-514 E. 185<sup>th</sup> Street, Cleveland. This building is split into two storefront areas and has housed a pet store and laundromat. The left half is currently a bakery and the right half is vacant. .... 28

Plate 12. Valley Vista Elementary School (CUY 1141018), constructed in 1961, 4049 Wallings Rd., North Royalton. ....	42
Plate 13. St. John Lutheran Church Christian Day School (CUY 1122619), constructed in 1962, 11333 Granger Rd., Garfield Heights. ....	42
Plate 14. St. Anthony of Padua Middle School (CUY 1145117), constructed in 1967, 6800 State Rd., Parma. ....	43
Plate 15. Normandy High School (CUY 1145617), constructed in 1967, 2500 West Pleasant Valley Rd., Parma. ....	43
Plate 16. St. Peter Chanel High School (CUY 1129424), constructed in 1956, 418 Northfield Rd., Bedford. ....	44
Plate 17. Kleist Center for Art and Drama (CUY 1142615), constructed in 1972, Baldwin-Wallace University, 95 East Bagley Rd., Berea. ....	45
Plate 18. Cleveland Public Library, Rockport Branch (CUY 1146308), constructed in 1964, 4421 West 140 <sup>th</sup> St., Cleveland. ....	46
Plate 19. Parma Heights Public Library (CUY 1149217), constructed in 1963, 6206 Pearl Rd., Parma Heights. ....	46
Plate 20. Former Our Lady of Perpetual Hope Roman Catholic Church, now St. Casimir Church (CUY 1127411), constructed in 1950, 18022 Neff Rd., North Collinwood. The church was designed by a Lithuanian architect for the Lithuanian congregation, and continues to hold masses in Lithuanian. ..	54
Plate 21. St. Mary's Romanian Orthodox Cathedral (CUY 1142808), constructed in 1960, 3256 Warren Rd., Kamm's Corners. The church houses the country's oldest Romanian Orthodox parish, founded in 1904, and houses the Culture and Romanian Ethnic Art Museum. ....	55
Plate 22. Green Road Synagogue (CUY 1123223), constructed in 1944, 2437 Green Rd., University Heights. ....	56
Plate 23. Former Clara Tagg Brewer Elementary School, now Canaan Baptist Church (CUY 1120310), constructed in 1953, 4699 E. 162nd St., Cleveland. ....	57
Plate 24. Cleveland Chinese Church (CUY 1123822), constructed in 1969, 474 Trebisky Rd., Richmond Heights. ....	58
Plate 25. Water tower at the Ford Stamping Plant in Walton Hills taken November 2016. ....	65
Plate 26. Ford Stamping Plant (CUY 1130824), constructed in 1954, 7845 Northfield Rd., Walton Hills. ....	66
Plate 27. General Motors Fabrication Division (CUY 1141617), constructed in 1949, 5400 Chevrolet Blvd., Parma. ....	67
Plate 28. Former Lamp Glass Department Headquarters for General Electric (CUY 1123422), constructed ca. 1959, 24400 Highland Rd., Richmond Heights. ....	67
Plate 29. Cleveland Builders Supply (CUY 1105124), constructed in 1959, 26481 Cannon Rd., Bedford Heights. ....	68
Plate 30. Former Graybar Electric Company (CUY 1110205), constructed in 1955, 1100 E. 55 <sup>th</sup> St., Cleveland. ....	68
Plate 31. Case Elementary School (CUY1135305), constructed in 1975, 4050 Superior Ave., Cleveland. ....	89
Plate 32. Rocky River Municipal Building (CUY 1158012), constructed in 1954, 21012 Hillard Blvd., Rocky River. ....	90
Plate 33. City of Maple Heights Fire Station No. 2 (CUY 1110124), constructed in 1956, 5720 Dunham Rd., Maple Heights. ....	90
Plate 34. South Euclid Post Office (CUY 1123122), constructed in 1975, 1568 Green Rd., South Euclid. ....	91
Plate 35. UAW Local 1250 Union Hall (CUY 1143415), constructed ca. 1959, 17250 Hummel Rd., Brook Park. ....	92

Plate 36. St. Martin of Tours Catholic Church (CUY 1103224), constructed in 1961, 14600 Turney Rd., Maple Heights. ....	99
Plate 37. Divinity Lutheran Church (CUY 1142417), constructed ca. 1964, 11877 Blossom Ave., Parma Heights. ....	99
Plate 38. St. Eugene Orthodox Church (CUY 1105724), constructed in 1962, 250 Center Rd., Bedford. ....	100
Plate 39. Holy Family Church of Parma (CUY 1140017), constructed in 1964, 7367 York Rd., Parma. ....	100
Plate 40. St. Elias Church (CUY 1146617), constructed in 1963, 8023 Memphis Ave., Brooklyn. ....	101
Plate 41. Former Calvary Baptist Church, now Slavic Full Gospel Church (CUY 1122020), constructed in 1966, 5851 E. Wallings Rd., Broadview Heights. ....	101
Plate 42. Former Brith Emeth Temple, now Lillian and Betty Ratner School (CUY 1134126), constructed in 1969, 27575 Shaker Blvd., Pepper Pike. ....	102
Plate 43. Kol Ami Suburban Temple (CUY1105823), constructed in 1954, 22311 Chagrin Blvd., Beachwood. ....	102
Plate 44. Aut-O-Rama Twin Drive-In Movie Theater (LOR 0231904), constructed in 1965, 33395 Lorain Rd., North Ridgefield. ....	113
Plate 45. Yorktown Lanes, bowling alley (CUY 1149317), constructed in 1960, 6218 Pearl Rd., Parma Heights. ....	114
Plate 46. Hillcrest Family YMCA (CUY 1128022), constructed in 1955, 5000 Mayfield Rd., Lyndhurst. ....	115
Plate 47. Masonic Temple (CUY 1142515), constructed in 1953, 366 Eastland Rd., Berea. ....	116
Plate 48. Former Buick dealership (CUY1129125), constructed in 1969, 6777 Mayfield Rd., Mayfield Heights. ....	123
Plate 49. Gas station (CUY 1139917), constructed in 1968, 10602 W. Pleasant Valley Rd., Parma. ....	124
Plate 50. Car wash (CUY 1142017), constructed in 1964, 7875 Day Dr., Parma Heights. ....	124
Plate 51. Aviation High School (CUY 1127501), constructed in 1972, N. Marginal Rd., Cleveland. ....	125
Plate 52. House in Forest Hills Subdivision (CUY 1130921), constructed in 1955, 1367 Burlington Rd., Cleveland Heights. ....	137
Plate 53. House in Carriage Park Subdivision (CUY 1106827), constructed in 1969, 5990 Hansom Dr., Solon. ....	137
Plate 54. House in Co-Moor Colony Subdivision (CUY 1154716), constructed in 1964, 19583 Tanbark Ln., Strongsville. ....	138
Plate 55. House in Lee Gardens Subdivision (CUY 1111623), constructed in 1942, 4404 Glenview Rd., Warrensville Heights. ....	138
Plate 56. House in Heather Hill Subdivision (CUY 1107624), constructed in 1969, 23870 David Dr., Bedford Heights. ....	139
Plate 57. House in Fortune Heights Subdivision (CUY 1153417), constructed in 1942, 4346 S. Parkside Dr., Brooklyn. ....	139
Plate 58. House not within a subdivision (CUY 1122423), constructed in 1959, 4041 Eastwood Ln., Warrensville Heights. ....	140
Plate 59. Waverly House Condominiums (CUY 1142712), constructed in 1963, 14567 Madison Ave., Lakewood. ....	141
Plate 60. Clague Towers (CUY 1138614), constructed in 1969, 3675 Clague Rd., North Olmsted. ....	141
Plate 61. Medium-sized apartment building (CUY 1103822), constructed in 1967, 26251 Brush Ave., Euclid. ....	142



Plate 62. Medium-sized apartment building (CUY 1127211), constructed in 1967, 17825 Lakeshore Blvd., Cleveland. .... 142  
Plate 63. Two-unit apartment building (CUY 1121422), constructed in 1957, 752 E. 222<sup>nd</sup> St., Euclid. .... 143



*This page intentionally left blank.*

## 1.0 Introduction

---

*Ohio Modern: Preserving Our Recent Past, Cleveland and Cuyahoga County Survey Report* presents the results of an architectural survey conducted throughout Cuyahoga County, with a focus on suburban communities that were created or drastically grew during the modern period, which for this report, is considered to be ca. 1940 through 1976. The City of Cleveland and its surrounding communities experienced changes during this period that altered the built environment of these areas, especially during the 1940s, 1950s, and 1960s. As the population expanded in number and diversity of ethnic groups, partially due to the new employment opportunities available in the area, new industrial, housing, commercial, ecclesiastical, recreational, and other developments were needed to serve the changing citizenry. Much of the new development was possible through the greater adoption and expansion of automobile ownership, which permitted families to live and work beyond the city limits. Without new interstates and improved federal and state highways, movement into areas previously thought to be hinterlands, would not have been possible. The map shown on Figure 1-1 shows the City of Cleveland with the surrounding communities of Cuyahoga County, while Figure 1-2 illustrates building construction starting in the nineteenth century, with a clear emphasis on city and suburban building campaigns.

Previous reports and surveys that focus on the mid-twentieth century modern period in Ohio include a state-wide historic context, *Ohio Modern: Preserving Our Recent Past*, and regional-specific, *Ohio Modern: Preserving Our Recent Past Dayton and Surrounding Area Survey Report*. Both projects were completed in 2010 and serve as excellent references in the identification of modern-era resources.

The *Ohio Modern: Preserving Our Recent Past, Cleveland and Cuyahoga County Survey Report* mirrors the previous survey report completed for

Dayton and its surrounding area in that it provides a summary of the area's overall history, and then focuses on specific topics relating to the modern period. Topics include industry, suburban development, transportation, military, agriculture, recreation, religion, education, and ethnic movements. Each topic includes a history of the subject placed within the context of Cuyahoga County as well as examples of resource types associated that were surveyed as part of this project. Research for the survey report was initiated in the summer of 2016 and continued into 2017. Research for individual resources was conducted after fieldwork was completed.

The project team inventoried approximately 600 resources within Cuyahoga County for the survey. Resource types include suburban houses, apartment buildings, shopping centers and malls, churches, schools, industrial complexes, government buildings, and others. Each resource surveyed was previously unrecorded either within the Ohio Historic Inventory (OHI) or listed within the National Register of Historic Places (NRHP); however, a few were previously identified as Cleveland Designated Landmarks by the Cleveland City Planning Commission. Fieldwork was conducted by two, two-person teams of architectural historians the week of November 28, 2016. Conducting fieldwork in the late fall when most of the leaves had fallen, allowed for clearer views of the resources from the public rights-of-way.

Each resource was recorded on an OHI form and submitted to the Ohio State Historic Preservation Office (SHPO) for review. Those forms, as well as this survey report, are on file at the SHPO, Ohio History Connection, 800 East 17<sup>th</sup> Avenue, Columbus, Ohio 43211 and through its website –

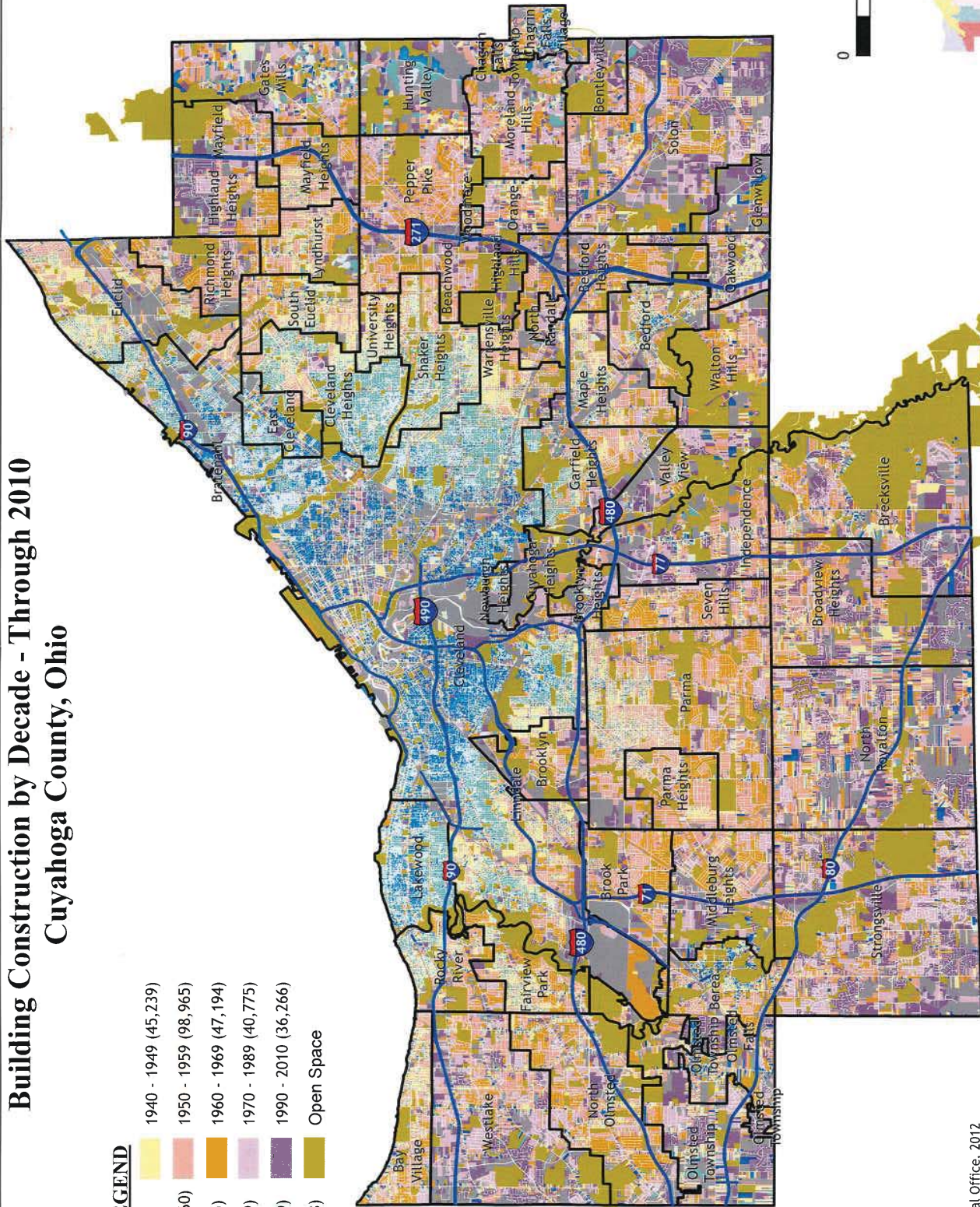
<https://www.ohiohistory.org/preserve/state-historic-preservation-office>.



# Building Construction by Decade - Through 2010 Cuyahoga County, Ohio

## LEGEND

Grey	N/A (58,781)	Yellow	1940 - 1949 (45,239)
Dark Blue	19th Century (11,260)	Light Blue	1950 - 1959 (98,965)
Medium Blue	1900 - 1909 (23,045)	Orange	1960 - 1969 (47,194)
Light Purple	1910 - 1919 (38,019)	Light Green	1970 - 1979 (40,775)
Dark Purple	1920 - 1929 (66,369)	Dark Green	1990 - 2010 (36,266)
Light Green	1930 - 1939 (17,988)	Dark Green	Open Space



SOURCE: Cuyahoga County Fiscal Office, 2012

CUYAHOGA  
COUNTY  
PLANNING  
COMMISSION  
5/17/2013



*This page intentionally left blank.*