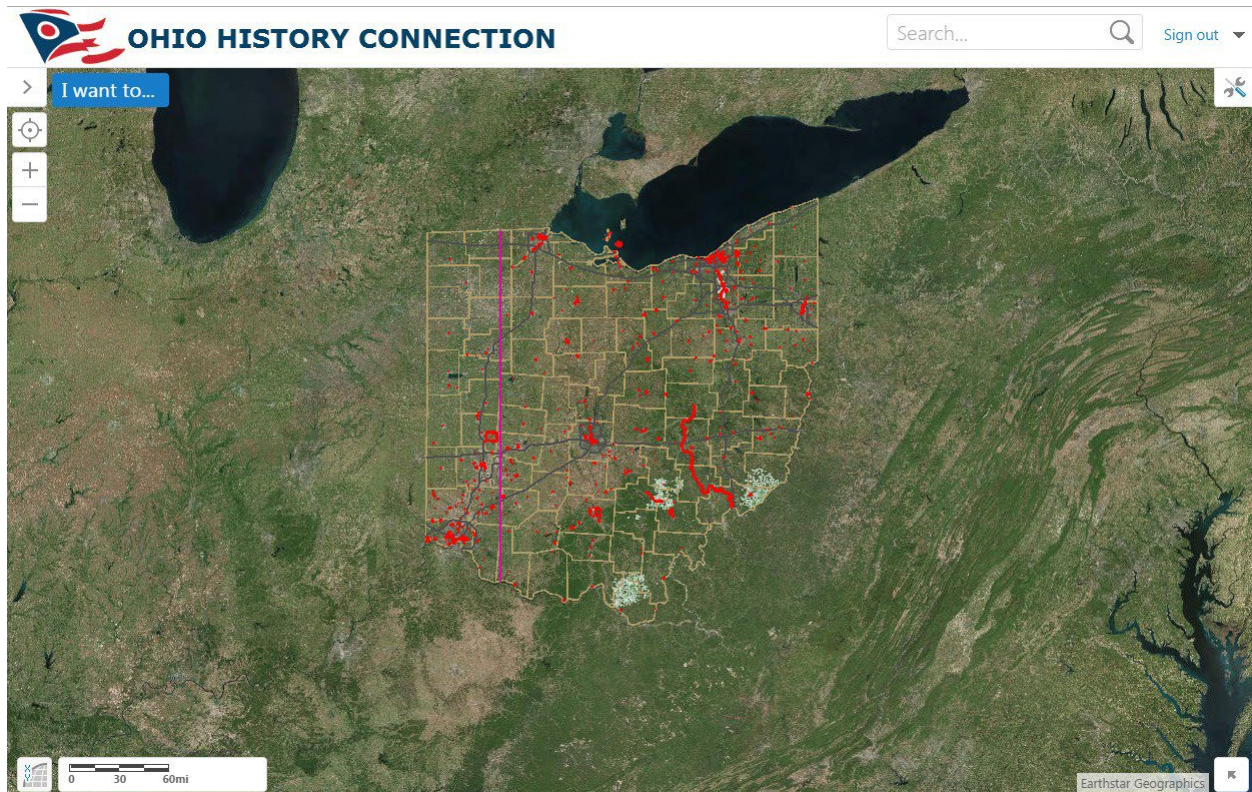




State Historic Preservation Office
Online Mapping System
Help Files

<https://gis.oshpo.org>



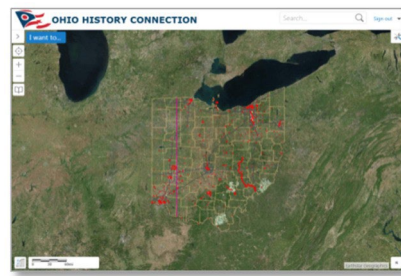
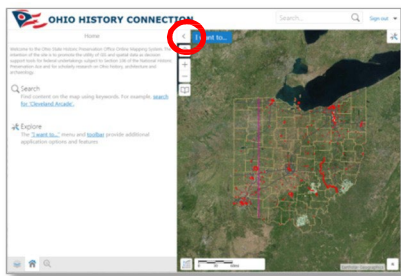
State Historic Preservation Office ▪ Ohio History Connection
800 E. 17th Avenue ▪ Columbus, OH 43211
614-298-2000 ▪ <https://gis.ohpo.org>

Mapping System Layout

Search Window: The search window is located at the top right of the map. It can be used to search for NR reference numbers, OHI numbers, OAI numbers, locations and more. The tool can also be used to geolocate addresses.



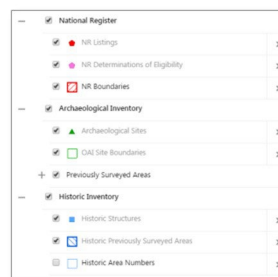
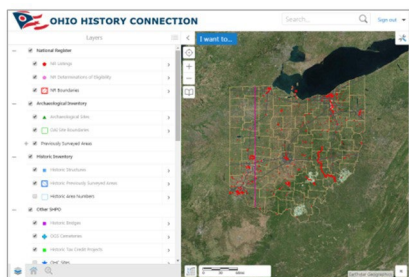
Data Frame: The Data Frame can be opened by clicking the button near the top left of the Map. The Data Frame is used to display the Home Panel, the Results Panel, Layers List, Legend and options for certain tools. To toggle between different panels, click the buttons at the bottom left of the Data Frame.



Home Panel: The Home Panel is displayed by default when the site is first opened. The Home Panel Displays a welcome message and gives basic instruction for using the site. To toggle between different panels, click the buttons at the bottom left of the Data Frame.

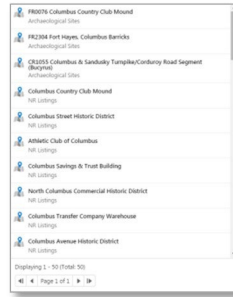
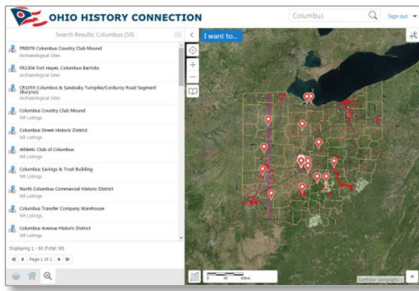


Layer List: The Layer List displays a list of data available in the site and can be used to toggle the visibility of layers. Layers are grouped thematically and the ordering of layers in the Layer List does not reflect the order layers are displayed on the map.

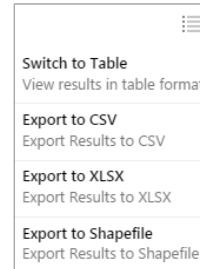
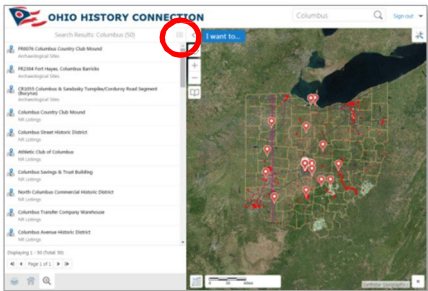




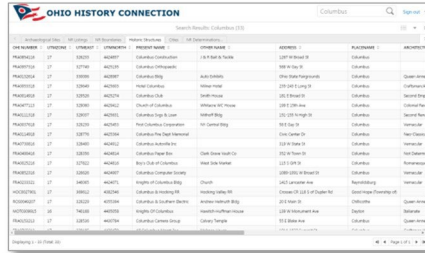
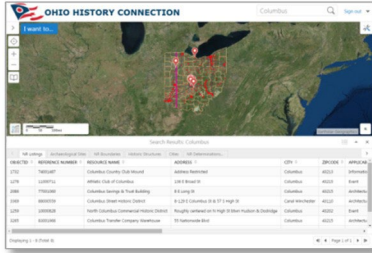
Results Panel: The Results Panel displays the results of the identification tool, the search tool and the buffered shape search. Multiple results will be displayed as a list. Selecting a result from the list will zoom the map to the selection and give the option to view additional details about the selection. Results can be viewed as a table by using the Panel Action Menu or exported as Excel or a shapefile.



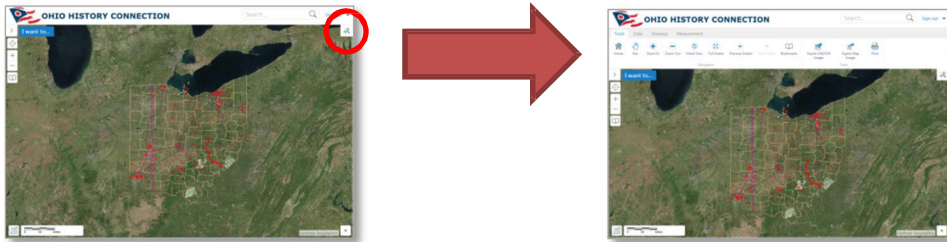
Action/Context Menu: The Panel Action menu is located at the top right of the Data Frame and is only visible if there is an action available. While the Results Panel is displaying results, the Panel Action Menu can be used display results in a tabular format or export results to Excel or as a shapefile.



Results Table: The results table displays data in a manner similar to Excel. The tables can be sorted by field and each layer is divided into its own tab. Clicking a record will highlight and zoom to it on the map. The table can be resized by click and dragging the top edge of the table and can be expanded to use the entire screen by using the up button at the top right of the table. The Panel Action Menu is located at the top right of the table and can be used to export data or switch back to the Results Panel.



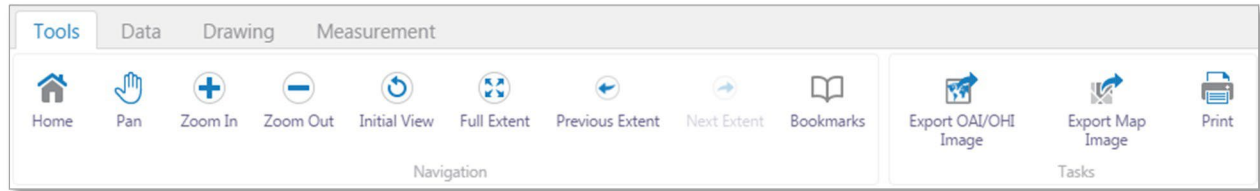
Toolbar: The toolbar can be opened by clicking the toolbar button near the top right of the map window. Tools are organized into subgroups. Tools can be used to navigate the map, return information, print maps and more.



The Toolbar

Tools are divided into tabs and subgroups based on their function.

Tools



Navigation Tools

The map navigation tools are used to move and zoom the map. They are located on the Toolbar under the Tools tab.

Home

The Home button will open the Home Panel. With the tool selected, click and drag the mouse to move the map. The Pan tool is active by default when you first enter the site.

Pan

The Pan button can be used to move the map.

Zoom Tools

The Zoom tools are used to move the map in and out. To use the tools, click and drag to create a zoom box. Releasing the button will zoom your map to the selected area. The mouse wheel can also be used to zoom the map in and out.

Zoom In and Out buttons are also located on the top left of the map window. Using these buttons will allow you to zoom the map in and out by increments.

Initial View and Full Extent

These buttons will return you to the statewide view.

Previous Extent and Next Extent

These tools function in the same way as browser back and forward buttons. The Previous Extent button will move the map back to the last extent you viewed. The Next Extent button return your map extent to the location it was in before using the back button. The Next Extent button is only active after using the Previous Extent button.

Bookmarks

The Bookmarks tool works in a similar manner to a web browser bookmark. Using this tool will allow you to save and name a geographic location and easily zoom to the location later. To save a bookmark, activate the tool and a box will appear with the message "Bookmark Current Extent". Click this box and you will be prompted to name your bookmark. To return to your saved bookmark, active the bookmark tool and select your saved location from the list.

Tasks

Export OAI/OHI Image

The Export OAI/OHI Image tool is used to export map images for use in IForm. Exported images will have the exact file size and dimensions required for use in IForm. Drawing tools can be used to create site locations and add labels before exporting.

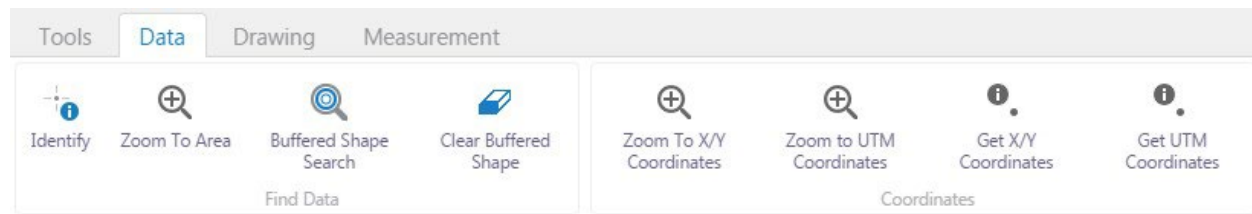
Export Map Image

The Export Map Image tool is used to export your current map view as an image with no extra information. Exported map images do not include a scale or legend. Map images can be exported with georeference data which can be used to import the image into other mapping systems.

Print

The Print tool is used to create a printable map that includes a scale and legend. It allows the user to select page size, resolution and scale.

Data Tools



FindData

The tools in the Find Data tab are used to identify and select features.

Identify Tool

The Identify tool is used to return information on a specific feature, such as a National Register Listing. To identify a feature, select the tool and click on the feature you want to know more about. Information on the identified feature will be displayed in the results panel to the left of the map.

Zoom to Area

The Zoom to Area tool is used to quickly zoom to a specific county, township or zipcode. This tool works in a similar manner to the search bar, but focuses on layers that benefit from having a layer specific search. When you select the tool, you will be presented with a list of searchable layers. Select the layer of interest and click OK. You will be presented with a drop down list of searchable features. You can select a feature from the list or type in what you are looking for. For example, typing Franklin with the county list active will automatically select Franklin from the list. Click OK, to zoom to the feature you've selected.

Buffered Shape Search

The Buffered Shape Search tool is used to define an area of interest and then create a geographic buffer around the area. Any OSHPO resources within the buffer area will be selected and displayed in the results pane. The resources selected by the tool are National Register Listings, NR Determinations of Eligibility, NR Boundaries, Archaeological Sites, Archaeology Previously Surveyed Areas(Phases 1-3), Historic Structures, Historic Previously Surveyed Areas, Historic Bridges, OGS Cemeteries and Historic Tax Credit Projects.

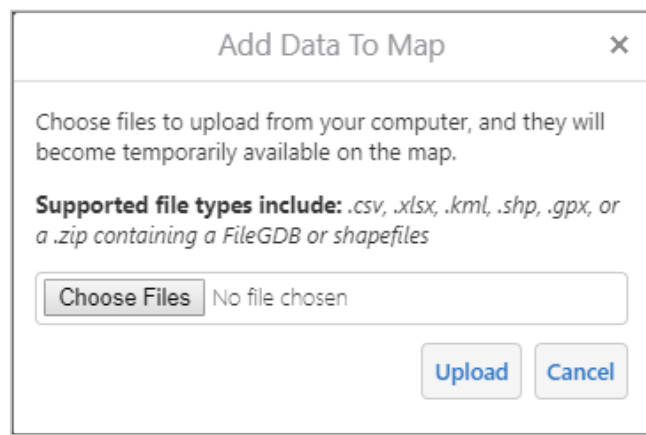
When you select the tool, you will be prompted to choose one of four geometry types. The choices are point, line, polygon and rectangle. Select a geometry type and then draw your area of interest on the map. Click OK and you will be prompted to enter a buffer distance.

Clear Buffered Shape Search

The Clear Buffered Shape Search is used to clear a Buffered Search from your map view and results pane. Creating a new Buffered Shape Search will also clear a previous search.

Uploading your project area and buffering it for OSHPO resources

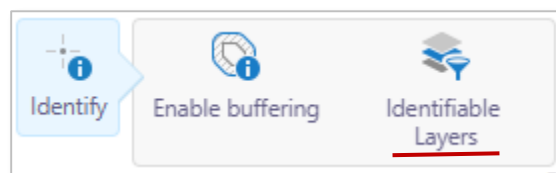
- 1) Upload your project area using the Upload Data tool on the Data Toolbar.
 - You can upload shapefiles, .kml, .csv, .xlsx, .gpx or a .zip file containing shapefiles or an ESRI file geodatabase.
 - The OMS will attempt to reproject your data to work with the site. If your data does not appear or appears in the wrong location, manually reproject your data to UTM Z17N NAD27(wkid 26717) or WGS84(wkid 4326).



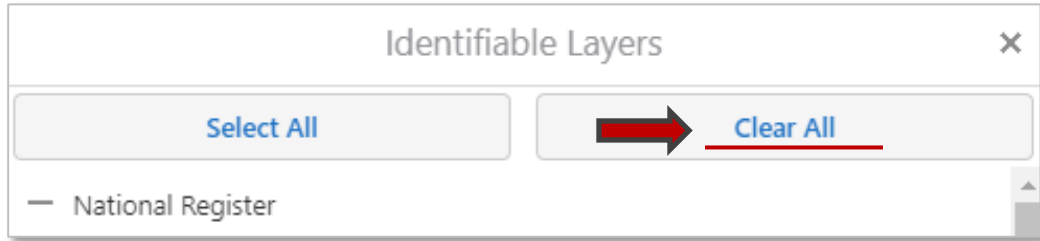
- 2) Select your project area.

Before you can buffer your project area, you must select it.

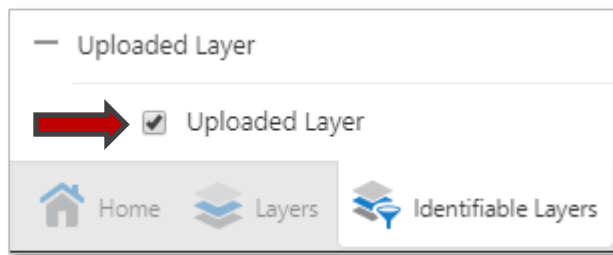
- a) Click the Identify tool on the Data Toolbar. The tool button will expand revealing more options.



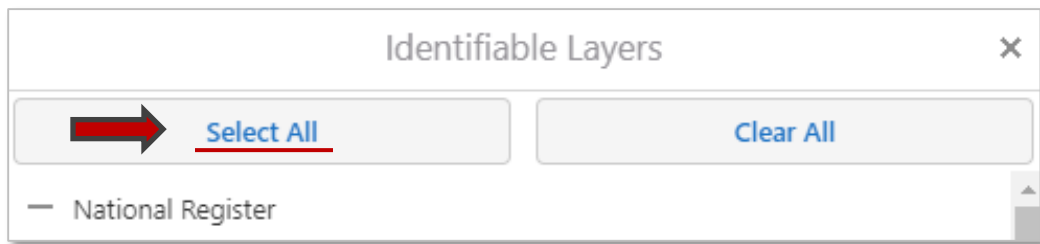
- b) Click Identifiable Layers and a window will open displaying all selectable layers. Click Clear All. This will prevent the Identify tool from returning data on all active layers.



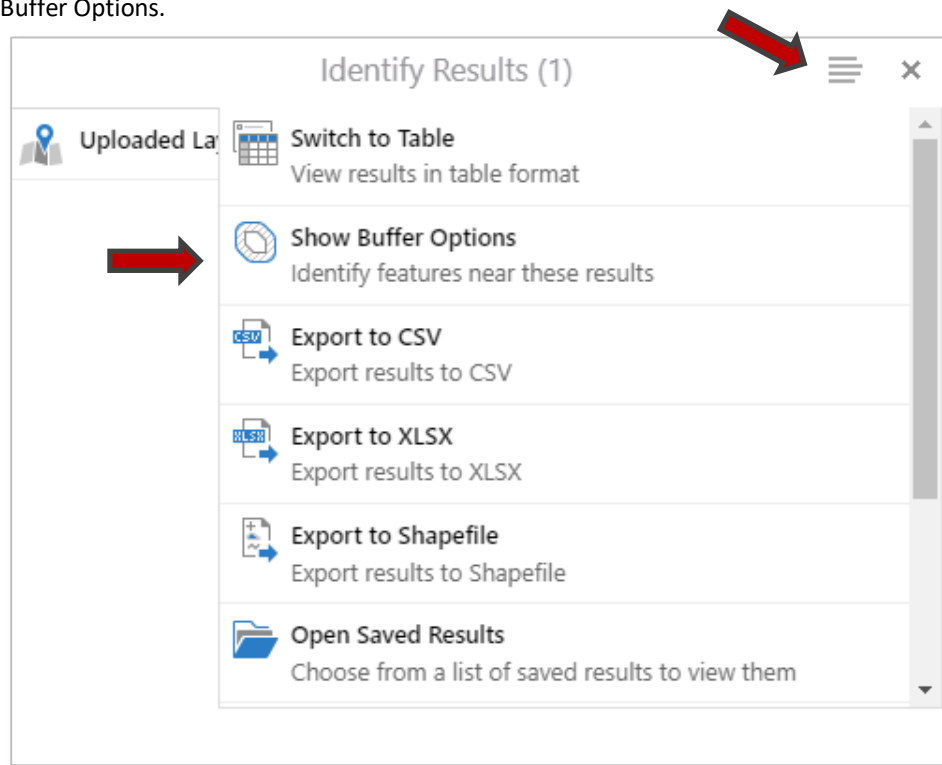
- c) Enable your uploaded project area for Identification. It will be at the bottom of the list.



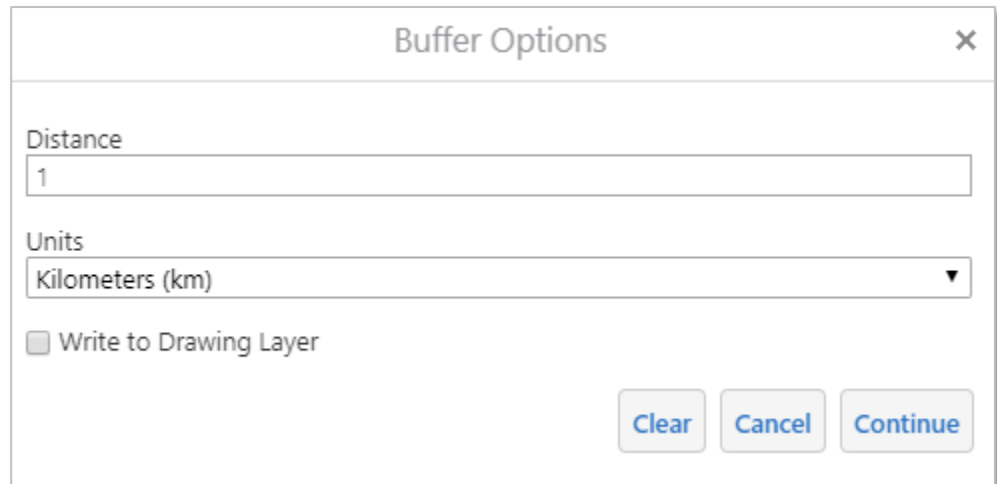
- d) Use the identify tool on your project area in the map window. It will show up in your Identify Results window.
e) Now re-enable all Identifiable layers by clicking the Select All option.



- 3) Buffer your project area for OSHPO resources.
- a) With the Identify Results window open, click the Actions Menu button and select Show Buffer Options.



- b) Select your buffer distance and click Continue.



- c) Your results will appear in the Identify Results window, where they can be viewed within the site or exported.

Coordinates

The tools in the Coordinate tab are used to locate and retrieve coordinates including UTM and Latitude/Longitude. For UTM, the site uses the projection UTM Zone 17N NAD27. Latitude/Longitude uses the Web Mercator WGS84 projection.

Zoom to X/Y

The Zoom to X/Y tool is used to locate latitude and longitude coordinates. Coordinates can be entered in several formats, including decimal degrees, degrees minutes seconds and degrees decimal minutes.

Latitude/Longitude format examples

Decimal Degrees – 41.354182, -84.28106244

Degrees Minutes Seconds – 39° 1' 33.09" N, 83° 25' 49.6" W

Degrees Decimal Minutes – 39° 1.5515' N, 83° 25.82666" W

To locate a Lat/Long coordinate select the tool and you will be prompted to select the coordinate format you will enter. Select your format and click Locate. Next you will be prompted to enter your coordinates and select a zoom map width. Enter your coordinates and click Go. Your point will be plotted on the map and your map view will be adjusted based on the zoom map width you selected.

Zoom to UTM Coordinates

The Zoom to UTM Coordinates tool is used to locate UTM coordinates. To locate a UTM coordinate select the tool and you will be prompted to enter your coordinates, select a UTM Zone and select a zoom map width. Once you've entered your coordinates, hit Go. Your UTM Coordinate will be located on the map and your map view will be adjusted based on the zoom map width you selected.

Get X/Y Coordinates

The Get X/Y Coordinates tool is used to capture a location's latitude and longitude coordinates. To retrieve a coordinate, select the tool. The results pane will prompt you to click a location on the map to retrieve a coordinate. Click the map in the desired location and a window will appear with latitude and longitude coordinates and plot the location on the map. The coordinates will be in decimal degree format and use the Web Mercator WGS 84 projection.

Get UTM Coordinates

The Get UTM Coordinate tool is used to capture a location's UTM coordinates. To retrieve a coordinate, select the tool. The results pane will prompt you to click a location on the map to retrieve a coordinate. Click the map in the desired location and a window will appear with the UTM coordinates and plot the location on the map. The coordinates will be in one of two UTM projections based on the zone of the coordinate. The possible projections are UTM Z16N NAD27 and UTM Z17N NAD27.

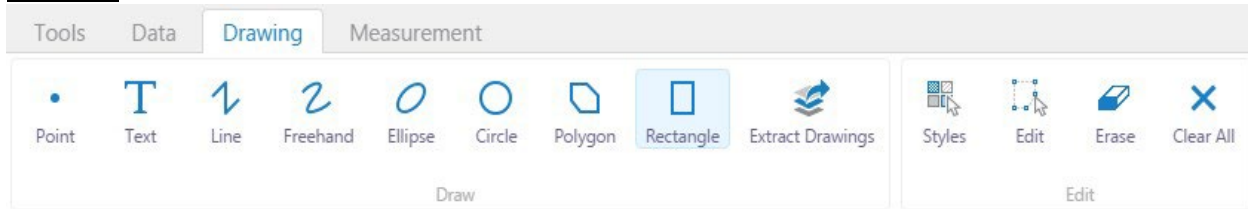


Using the Coordinate Widget

In the lower left corner of the map window is the XY Coordinate Widget. This tool can be used to dynamically display coordinates based on the location of your mouse cursor. Click the widget button to activate it. Once the widget is active, it will expand and give you the option to select a coordinate type. Select your desired projection and hover the mouse over the map to see coordinates displayed by the widget. For

capturing coordinates it is generally recommended to use the Capture UTM Coordinates tool as the captured coordinate is fixed and will not change if your mouse moves.

Drawing



Drawing tools are used to create text, points, lines and polygons on the map. Any shape created with the drawing tools can be exported as a shapefile.

Points

To create a point, select the tool and then click a location on the map. A point will be placed at the location you clicked.

Text

To add text to the map, click the map where you the left justification of your text should be. Enter your text when prompted and click ok.

Lines

To add a line to the map, select the tool and then click the map where your line should begin. Next, click where the next vertex or end point of your line should be. Double click to complete your line.

Freehand

To add a freehand line to the map, select the tool and click and hold the mouse where your line should begin. While continuing to hold down the mouse button, drag the mouse along where you want to place your line. Release your mouse button to complete your free hand line.

Circles and Ellipses

The Circle and Ellipse tools function in the same manner. To add a circle or ellipse to the map, select the tool and click and hold the mouse button where the center of your shape should be. While still holding down the mouse button, drag your mouse to change the size and shape of your circle or ellipse. Release the mouse button to complete your shape.

Polygons

To add a polygon to the map, select the tool and then click the map where your polygons should begin. Click where each vertex of your shape should be. Double click the last vertex to complete your polygon.

Rectangles

To add a rectangle to the map, select the tool and then click and hold the mouse button the map where one of the corners of your rectangle should be. While still holding the mouse button down, drag your mouse to change the size and shape of your polygon. Release the mouse button to complete your rectangle.

Extracting Drawings

Any drawing you create using the drawing tools can be extracted from the site as a shapefile. To extract a drawing, select the tool. You will be prompted to define what shapes should be extracted from the site. Select either the polygon or rectangle tool and draw a shape around the drawing(s) you want to extract from the site. You can also select the option to extract all drawings from your current map view. Once you have selected drawings to be extracted, click OK and your drawings will be downloaded as shapefiles stored in a .zip file.

Styles

The style of drawings and text can be changed and edited. Style can be set before or after a drawing is created. To set the style before creating a drawing, select the drawing tool you wish to use. Then select the style button. You will be prompted to select from a list of predetermined styles. After you've selected a style, continue to use your selected drawing tool as usual. To change the style of an existing drawing can be done by using the Edit tool.

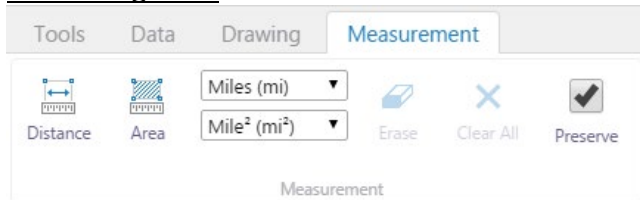
Editing Drawings

Drawings can be edited after being added to the site. To edit a drawing, select the tool and then click on the drawing you would like to edit. To change the shape of a drawing, click and drag any of the shapes vertices, which appears as small circles. To move a drawing, click and hold the mouse over the drawing and then drag the drawing to its new location. Release the mouse to complete the move. To change the style, select the Styles tool and select the desired style.

Erasing Drawings

To erase a drawing from your map, select the erase tool then click on the drawing you would like to remove from the map. To remove all drawings from a map use the Clear All tool.

MeasuringTools



Measuring tools can be used to measure distance or area in a variety of formats.

Distance

The Distance measuring tool functions in a similar manner to the Line drawing tool. To measure a distance, select the tool and then click the map along the line you want to measure. Double click to complete your measurements. The total measured distance as well as the measured distance of each segment of your line will be displayed on the map. To change the unit of measurement, select your desired measurement unit from the top of two dropdown lists just to the right of the Area tool. The measurement units can be set before or after a measurement line is created.

Area

The Distance measuring tool functions in a similar manner to the Polygon drawing tool. To measure an area, select the tool and then click the map along the borders of the area you want to measure. Double click to complete the measured area. The total area and length of the measured shape's perimeter will be displayed on the map. To change the unit of measurement, select your desired measurement unit using from the bottom of the two dropdowns lists just to the right of the Area tool. The measurement units can be set before or after a measured area is created.

Erase

The Erase tool can be used to delete individual measurements. To erase a drawing, select the tool and then click on the measurement you want to delete.

Clear All

The Clear All tool will erase all measurements. After selecting the tool, you will be prompted to confirm you want to erase all measurements. Clicking OK will erase all measurements.

