

APPENDIX B



Plate B1. 1947 Aerial view of Colonial Hills neighborhood in Worthington (Campbell 2010a).



Plate B2. Smallest model house built in Colonial Hills neighborhood in Worthington, ca. 1943 (Campbell 2010a).



Plate B3. Largest model house built in Colonial Hills neighborhood in Worthington, ca. 1943 (Campbell 2010a).



Plate B4. Ca. 1943 streetscape view of Colonial Hills neighborhood in Worthington (Campbell 2010a).

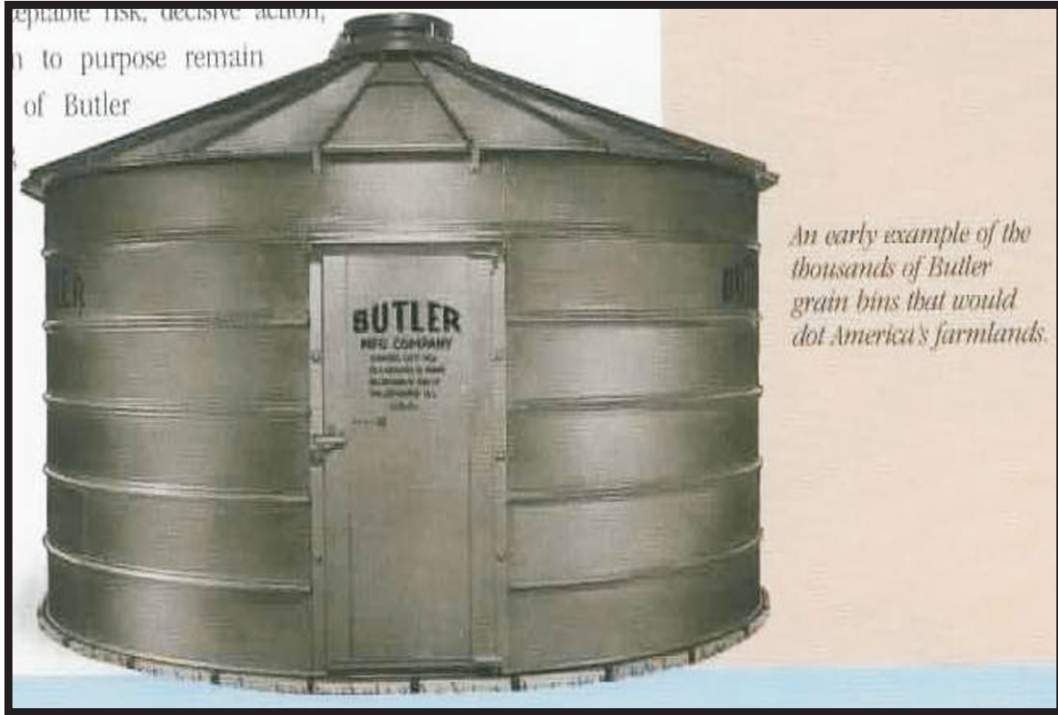


Plate B5. Early twentieth century prefabricated metal Butler grain bin (Butler Manufacturing Company n.d.).

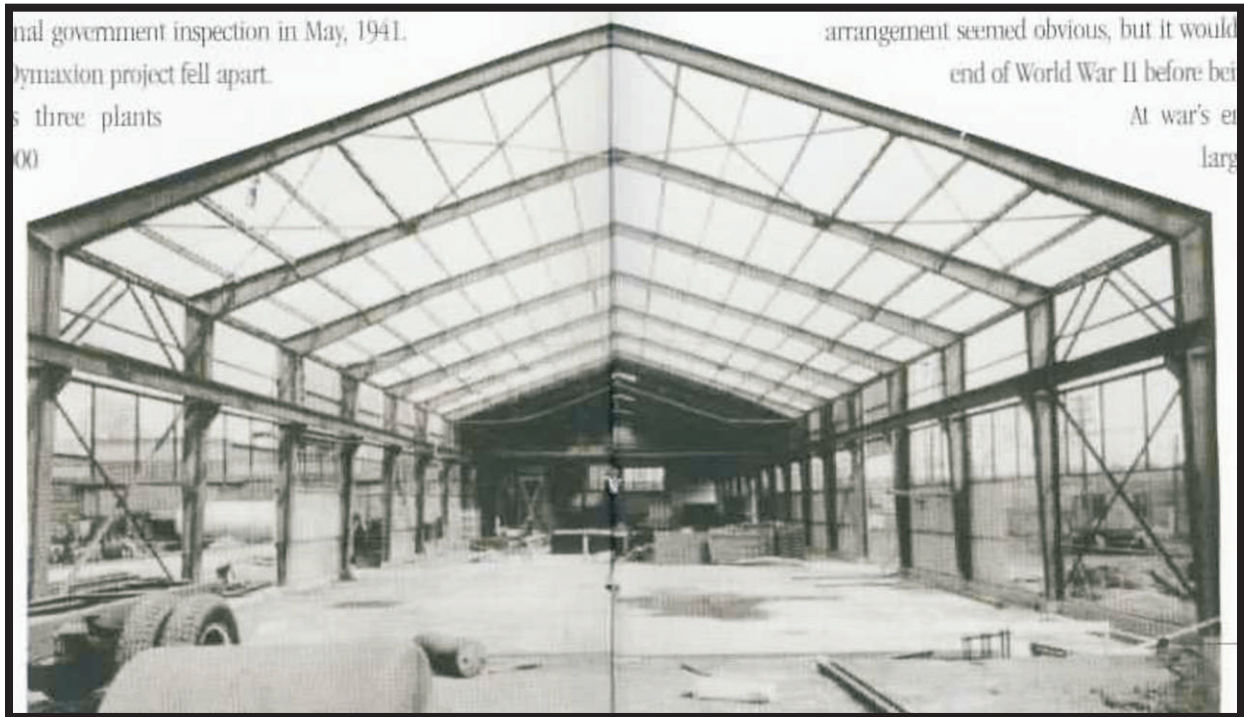


Plate B6. Early twentieth century example of a rigid frame structural steel frame for a prefabricated building (Butler Manufacturing Company n.d.).



Plate B7. Example of an early model of a prefabricated building designed by the Butler Manufacturing Company (Butler Manufacturing Company n.d.).



Plate B8. Ca. 1952 view of the Adelphi Covered Bridge approach (ODOT Photo Archive 2010a).



Plate B9. Ca. 1950 view of bridge on US 30 (Lincoln Highway) in Lisbon (ODOT Photo Archive 2010b).



Plate B10. Ca. 1953 view of bridge in Carroll County showing typical design elements and height clearance (ODOT Photo Archive 2010c).



Plate B11. Toll Plaza on Newly Constructed Ohio Turnpike, ca. 1955 (Ohio Turnpike Commission 2007).



Plate B12. Ca. 1968 view of I-275 and I-75 interchange in Warren County (ODOT Photo Archive 2010d).

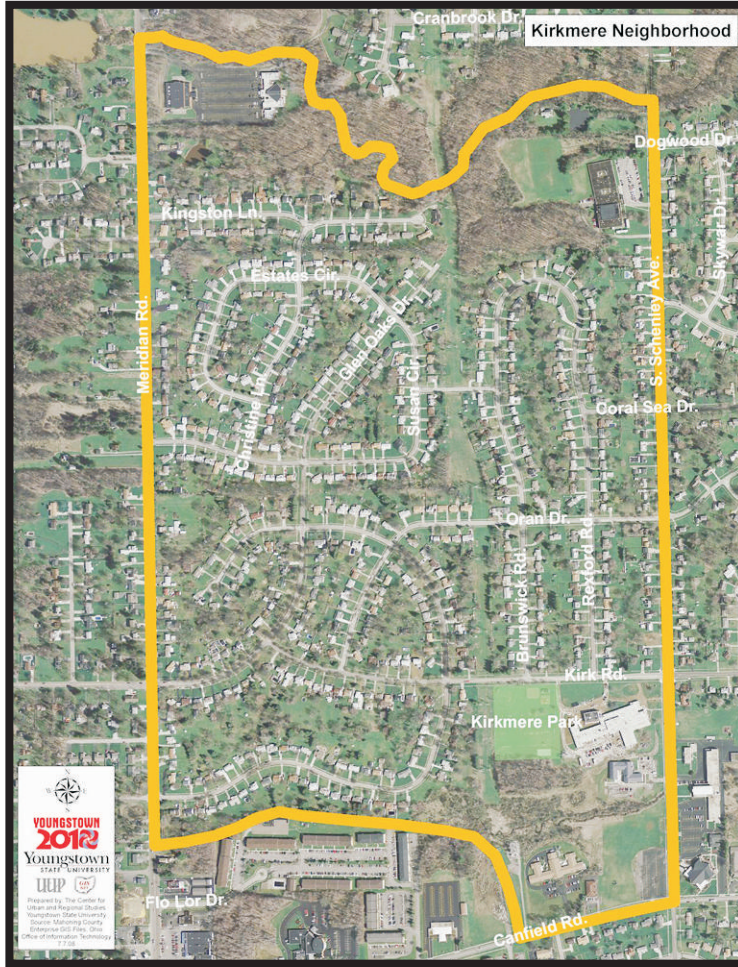


Plate B13. Aerial view of Kirkmere neighborhood in Youngstown (City of Youngstown 2010).



Plate B14. International-style, ca. 1961 Kingsbury School, 315 S. 6th Street, in Ironton (Old Ohio Schools 2010).



Plate B15. International-style, ca. 1959 Lawrence Street School #2 at N. Seventh Street in Ironton (Old Ohio Schools 2010).



Plate B16. International-style McBroom Junior High School, built in 1953, 1956, 1963, and 1966, in St. Mary's, Auglaize County (Old Ohio Schools 2010).



Plate B17. International-style, ca. 1954 Overlook School at 524 Broad Street in Wadsworth, Medina County (Old Ohio Schools 2010).

Mister...wouldn't you rather reach for your evening paper?

O'Y, BROTHER! All day at work you've been up against the grindstone. Now you're worn right down to the nub. You want to relax, settle back in your chair, put your feet up, and glance through the paper.

But, you'd feel uneasy if your wife did the dishes alone. So, you're the "good sport" who gets a work-out every night, wiping dish after dripping dish.

Why don't you let General Electric do the dishes for you and your wife?

No Hand-Rinsing! Dishes Out of Sight! Pots and Pans, too!

Just brush loose food off the plates... the dishwasher pre-rinses them for you. Then washes with famous "spray-rub" action that makes even sticky pots and pans come sparkling clean. Takes off all hot soil that's been baked on! Finally, the dishwasher double-rinses with clean hot water... dries the dishes with fan-circulated warm air and then shuts itself off.

Dishes Cleaner than "Hand-Washed"...

... because they're washed in water hotter than your hands can stand. Hot water stays hot thanks to G.E.'s famous Calrod® unit.

In the dishwasher, dishes and glasses are cushioned on soft plastic-coated trays that remain stationary. Only the water swishes around.

It's so convenient. The sturdy, dependable G-E Dishwasher glides out at a touch. Easy loading. No tiresome bending. No tinsome stooping, and plenty of counter space left.

Your kitchen's always cleaner because the G-E Dishwasher holds (and hides) a complete service for eight, including ten glasses.

You'll Save Her as Much as an Hour a Day!

A G-E Dishwasher saves the average wife as much as an hour a day... sometimes more. And, as the man of the house, you can appreciate that here is an investment which will increase the value and salability of your home.

Let a G-E PRE-RINSING Dishwasher do the dishes for you. See your General Electric dealer for a demonstration today. General Electric Co., Louisville 2, Ky.

**Dishes Washed, Fan-Dried, Out of Sight...
G-E pre-rinsing DISHWASHER
GENERAL ELECTRIC**

Plate B18. 1952 advertisement for General Electric dishwashers (Retro Renovation 2010a).

Now! Use up to 5 appliances at once...and never blow a fuse!



New Westinghouse Automatic Appliance Center costs less to install in old or new homes than equivalent wiring!

At last you can use your wonderful electric appliances simultaneously . . . and get top performance from each! No more loss of power and efficiency. The new Westinghouse Automatic Appliance Center supplies all the current you need for as many as five appliances, without blowing a fuse.

Clock and Timer give automatic on-off control to start and stop cooking even when you're out. Two outlets connect appliances with attached cords, three Hide-away Cords on retractable reels end cord storage problem.

Best of all, this is a compact, self-contained unit which can be installed in a number of locations with one 3-wire connection. It's the low-cost, one-step way to bring your kitchen wiring up-to-date!

Westinghouse Electric Corporation
Electric Housewares Division
Mansfield, Ohio

Mr. W. M. Byrne, Merchandise Manager.
Please send me complete information including simple installation instructions on the new Westinghouse Automatic Appliance Center.

Name _____
Address _____
City _____ Zone _____ State _____

YOU CAN BE SURE
...IF IT'S

Westinghouse



LIVE IN THE WONDERFUL WORLD OF FRIGIDAIRE BUILT-INS

A JEWEL AMONG WALL OVENS! FLAIR

Start your new built-in kitchen with the new 40" Flair Double Wall Oven. See-Level Ovens with smartly-etched filigree See-In Doors let you watch what's cooking. Exclusive Glide-Up Door design eases cleaning and use. 30" models also available.

ADD FAST AUTOMATIC SURFACE COOKING Heat-Minder and Speed-Heat Units!

Counter cooking convenience at its best. Four Frigidaire models offering a variety of cooking unit arrangements. Custom Imperial shown has Control Panel for installation on cabinet front or rear wall. Time Signal plus a Speed Heat Unit, and Heat-Minder Unit for automatic cooking. Brushed Chrome, Frigidaire color.*

Plate B19. 1954 advertisement for Westinghouse appliance centers (Retro Renovation 2010a).

Plate B20. 1963 advertisement for Frigidaire built-in appliances (Retro Renovation 2010b).

FLOOR FAN moves air in all directions without creating a draft. Only 22" high and 20" in diameter, it serves as a coffee table with removable tray. \$34.95 without tray.

These Will Cool a Room!

AIR CIRCULATOR can be adjusted from 6 ft. to 8 ft. in height. Fan blade can also be adjusted. Large unit will move 2500 cu. ft. of air per minute. \$79.95 and up.

ROOM AIR CONDITIONER cools, circulates, filters, and dehumidifies air. Suitable for double-hung windows. 1/2-ton capacity. Unit is 27" wide, 21" deep. \$129.95.

PORTABLE FAN has adjustable stand. Center of fan can be set from 28" to 48" from floor. Unit can be used as exhaust fan for casement windows. \$79.95.

See "Where Credit Is Due" on page 124.

ROOM AIR CONDITIONER comes in two sizes, 1/2 and 1 horsepower. Unit may be used in double-hung windows 23" wide and up. 1/2 hp. model is 16 1/2" high, 22 1/2" wide and 18 1/2" deep. Both sizes have same basic design. \$163.00 and up.

Speed Queen
AMERICA'S WORK CLOTHES WASHER

2 HARD-CASH SAVINGS

- 1 SAVE UP TO \$175.00 ON PRICE
- 2 SAVE UP TO \$40.00 A YEAR ON SOAP AND HOT WATER

Yes, you can buy a big, family-size Speed Queen, capable of washing up to 7 loads per hour, for as much as \$175 less than top price washers. In addition, you can save up to \$40 a year on soap and hot water, depending on what your local electric or gas rate is. Surely these hard cash savings are worth checking before you buy a new washer. See your nearest Speed Queen dealer this week. Or write —

SPEED QUEEN CORPORATION
Evanston, Wisconsin

SPEED QUEEN
WASHERS • DRYERS • IRONERS

Plate B21. 1952 advertisement for Speed Queen washing machines (Retro Renovation 2010a).

Eljer bathroom furniture lets you be less of a maid, more of a wife and mother

Unit-rim counter lavatory (20" x 18")—has no metal rim band that traps dirt. Also carries in new oval shape (20" x 16") for counter tops as narrow as 21".

Flush-mounted bolt-covers on attractive-vented toilet base are easier to clean. No unsightly bolt caps to fall off.

Flat bottom, wide rim seat shows Eljer's concern for bathroom safety. Several built-in and 5 1/2" sizes. Other Eljer baths in 4', 4 1/2", 5', 5 1/2" and 6' lengths.

The beauty of Eljer elegance lies not in its smart styling alone. These quality fixtures are also designed so you'll spend fewer hours keeping your bathroom neat and tidy. Eljer's gleaming porcelain finish on sturdy vitreous china and cast iron fixtures resists acid and guarantees that fixture colors will never fade. There's an Eljer color, design and style that appeals to your taste—and pocketbook, too—whether you're building a new home or remodeling. Ask your contractor about Eljer plumbing fixtures, or send for Eljer's free "Bathroom Ideas" booklet to The Murray Corporation of America, Eljer Plumbingware Division, Dept. AH, P. O. Box 836, Pittsburgh, Pennsylvania 15230.

ELJER
SINCE 1904 FINE PLUMBING FIXTURES

*Optional at extra cost.

Plate B22. 1964 advertisement for Eljer bathroom fixtures (Retro Renovation 2010b).

LOOK! YOU CAN PUT TERANO AND TEXFLOOR TILE RIGHT OVER YOUR OLD FLOOR!

says Mr. Traxwell, Sloane Tile Expert.

Left: Sloane Texfloor Tile is a slick to install material, without taking up your old flooring! These stream-lined, 9" x 9" tiles are designed in an entirely new repetitive pattern that hides dirt, keeps joints, floor, \$30.00, \$10.00, \$10.00, \$10.00.

Right: Sloane Terano Tile is a new, non-slip pattern that actually improves and beautifies your present floor. You won't need any special cutting tools; shape this wonderful tile to fit corners and angles with scissors.

And wait until you see the new Texfloor and Terano patterns—they actually hide dirt, footprints, smudges! Your Sloane tile floor stays cleaner longer! News tip: Texfloor and Terano are a natural for walls, too! Why wait? See them now, at your Sloane dealer's.

*A Sloane Texfloor or Terano floor—for just \$27.50! That's what it will cost to cover a 6' x 10' floor yourself with these wonderful tiles!

SLOANE FLOOR AND WALL TILE
SLOANE-BLAIR CORPORATION, a Division of Alexander Health, Inc.

Now—see how little each kind of Sloane Tile costs for covering a 6' x 10' floor!

Texfloor, Terano, Fineliner and Marbletone	so little as \$17.50
Korona™ Tile Special 24.99
Korona™ Tile Deluxe 27.25
Korona™ Tile Supreme 29.25
Traxfloor (Aquatic Tile) 11.25
Rubber Tile 39.00

(Prices vary slightly with geographic location.)

Planning a new home? Be styling your present one? You'll want this wonderful one too! Contact Your Own Tile Dealer and Wall Tile Dept., A Sloane-Blaire Corporation, 280 Fifth Avenue, New York 16, N. Y.

says Mr. Traxwell!

SLOANE GIVES YOU THE WIDEST SELECTION OF FLOOR AND WALL TILES!

Plate B23. 1952 advertisement for Sloane floor and wall coverings (Retro Renovation 2010a).

Check this timesaving, work-saving ideal against your present kitchen!

1. Sound-deadened steel construction; enameled doors, positive-closing doors.
2. Sublime enamel finish—sparkles at the touch of a damp cloth.
3. Cleanable, acid-resisting porcelain enameled steel sink top, stainless steel.
4. Spacious, colorful, durable work surface at just-right height.
5. Plenty of accessible storage space! Includes kitchen cabinet that fits on extra counter, rolling door cabinet for spices.
6. Half-Round Edge Whirl-Nut—effective Wall Wash-Nut for added kitchen beauty.
7. Youngstown Kitchen Jet-Tower® Dishwasher really minimizes hand dishwashing!
8. Youngstown Kitchen Food Waste Disposer breaks garbage!

This all steel kitchen features Youngstown Kitchen Electric Sink with Food Waste Disposer and Jet-Tower® Dishwasher.

COMPARE your present kitchen with this gleaming white Youngstown Kitchen. Compare for beauty and convenience. You'll find everything you want in your dream kitchen is here!

Time savings that mean added hours of leisure for your week surfaces and storage space galore, played just right to save you time and stress. Baked-on enamel finishes quickly wipe clean with a damp cloth. And your all-steel Youngstown Kitchen is built to last a lifetime!

Work savings! Youngstown Kitchen Jet-Tower® Dishwasher really minimizes hand dishwashing.

And Youngstown Kitchen Food Waste Disposer rid your home of garbage forever. Your kitchen can reach this timesaving, work-saving ideal—no matter what its size or shape. Let your factory-trained Youngstown Kitchen dealer show you your dream kitchen in perfect miniature. Show you how to save on installation, and how easy it is to finance. If building, specify a Youngstown Kitchen—'twill save!

MULLINS MANUFACTURING CORPORATION
WARREN, OHIO
Youngstown Kitchens are sold throughout the World.

Youngstown Kitchen Cabinet Sink, 48" Deluxe Top, 18" deep, 14" wide. Ten big bowls, two dishboards, nine spots, storage compartments, drainage, acid-resisting porcelain-enameled steel top. Youngstown Kitchen Food Waste Disposer at extra cost.

Youngstown Kitchen 48" Electric Sink. Full sink, features Jet-Tower® Dishwasher. In 90% stainless steel, finished and sealed with water-tight, acid-resistant enamel. Heavy-duty. Crated against fire, shock, damage, rust, spray at extra cost.

New Battery Case Wall Cabinet and Battery Center Base Cabinet put aluminum-mounted counter tops to work. Each has three rotating shelves that turn together at finger touch to save space within easy reach. That provides plenty of room for dishes, canned goods and countless other items.

Send 25¢ postage (including and enclosing this book). I enclose 10¢ for mailing this savings plan!

I plan to build I plan to remodel

I am interested in Kitchens Dishwashers Food Waste Disposers

NAME *Please print:* _____
ADDRESS _____
CITY _____ STATE _____
COUNTY _____ ZIP _____

Youngstown Kitchens

Call Warren, Ohio, Warren 21, and without charge get the name of a nearby dealer.

Plate B24. 1952 advertisement for Youngstown Kitchen modular steel kitchen cabinets (Retro Renovation 2010a).



Plate B25. 1952 advertisement for Youngstown Kitchen modular steel kitchen cabinets (Retro Renovation 2010a).

The house with a Youngstown Kitchen is worth more!



Youngstown Kitchen Cabinet Sink. 66" He-Late-Yeats Top, like all Youngstown Kitchens Cabinet Sink tops, of easy-grip, acid-resisting porcelain-enamelled steel. One of 14 models. Food Waste Disposer at extra cost.



Youngstown Kitchen Electric Sink combines Cabinet Sink and Jet-Tower® Dish-washer features. Food Waste Disposer, rinse spray available at extra cost.



New Battery Center Wall Cabinet utilizes corner space to full capacity. Three rotating shelves turn together to bring desired articles within easy reach. **Battery Center Base Cabinet** also puts otherwise-wasted corner space to work.



Youngstown Kitchen Food Waste Disposer. Sheds food waste down the drain. 3 ways best: nonstop feeding, double-action shredding, self-cleaning action.

Every Youngstown Kitchen, like this one with Electric Sink, is of sturdy steel, built to last a lifetime.

Time and work saved every day, when you install a Youngstown Kitchen, makes your house worth more—to you, and to someone else who might want to own it.

And this is lasting value, because a *steel* Youngstown Kitchen stays lovely. So start enjoying happier kitchen living now . . . and increase home value. No other improvement could give greater pleasure.

Dishes are washed hygienically clean by your Youngstown Kitchens Jet-Tower® Dishwasher . . . in piping-hot, booster-heated water, hotter than your hands can stand. Food waste is shredded down the drain by Youngstown Kitchens Food Waste Disposer.

Your gleaming white Youngstown Kitchen, of rugged steel, is amazingly easy to keep clean, always looking new. There's storage space galore, work surfaces aplenty.

Let your factory-trained Youngstown Kitchen dealer show you your dream kitchen in perfect miniature, show you how to save on installation, and how easy it is to finance. If building, specify a Youngstown Kitchen—you'll *sure!*

MULLINS MANUFACTURING CORPORATION
WARREN, OHIO
Youngstown Kitchens are sold throughout the World



*Reg. U. S. Pat. Off.

Call Western Union, Operator 25, and without charge get the name of a nearby dealer.

Mullins Manufacturing Corporation
Dept. A-452, Warren, Ohio

Send 24-page planning and decorating idea book. I enclose 10¢ for mailing. (No stamps, please.)

I plan to build I plan to remodel

I am interested in Kitchens Dishwashers Food Waste Disposers

NAME (Please print) _____

ADDRESS _____

CITY _____ ZONE _____

COUNTRY _____ STATE _____

© 1962 Mullins Manufacturing Corporation

Plate B26. 1962 advertisement for Youngstown Kitchen built-in steel kitchen cabinets (Retro Renovation 2010b).



Plate B27. Ca. 1965 advertisement for Youngstown Kitchen steel kitchen cabinets

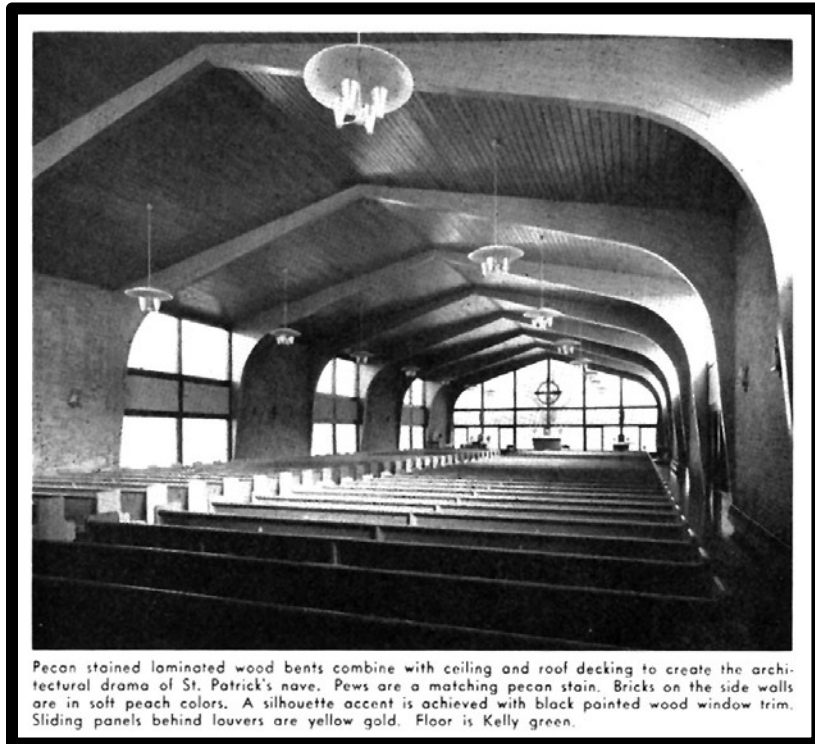


Plate B28. Article in Ohio Architect, February 1958 Showing Glued Laminated Timber Arches used in St. Patricks of Heatherdowns, Toledo, Ohio, by Architects Munger, Munger & Associates.

WATER WORKS, PINE BLUFF, ARK.

HOSPITAL, WILMINGTON, OHIO

ELEMENTARY SCHOOL, MINNEAPOLIS, MINN.

CITY HALL, STEELWATER, OKLA.

PARKING GARAGE, TYLER, TEX.

FIRE STATION, OMAHA, NEB.

**Distinctive Beauty and Outstanding Service
for Municipal Buildings with
Architectural Concrete**

These examples show the possibilities architectural concrete offers the architect for designing municipal buildings to make any community proud.

This versatile structural material has rugged strength, unexcelled resistance to the elements, maximum fire safety and long life.

Being moderate in first cost, needing little maintenance and having long life, architectural concrete municipal buildings will please both taxpayers and officials with their **low annual cost.**

Our technical staff will gladly help you obtain the structural and economical advantages of concrete. Free literature, distributed only in the U.S. and Canada, is also available on request.

PORTLAND CEMENT ASSOCIATION
50 W. Broad St., Columbus 15, Ohio

A national organization to improve and extend the uses of portland cement and concrete ... through scientific research and engineering field work

14 THE OCTOBER 1954 OHIO ARCHITECT

Plate B29. Advertisement in Ohio Architect, October 1954 for architectural concrete construction by the Portland Cement Association

**Greater architectural expression
with Marietta
precast concrete panels**

HITAL CARE CORPORATION BUILDING, CINCINNATI, OHIO • ARCHITECT, KRAL, ZEPF, FREITAG AND ASSOCIATES, CINCINNATI, OHIO.

**MARIETTA
CONCRETE COMPANY**
P. O. BOX 669 MARIETTA, OHIO
TELEPHONE 614-373-3211

Plate B30. Advertisement in Ohio Architect, May/June 1970 for Precast Concrete Panels by the Marietta Concrete Company, Marietta, Ohio.

Modern retail food store

Low-cost industrial building

Two-story warehouse

Light, precast school

Eight-story office building

Concrete Tilt-up Construction Is Quick and Economical for Any Type Building

One of the fastest-growing building methods is concrete tilt-up construction. In this method, concrete walls are cast flat, usually right on the concrete floor, in edge forms and then tilted up into position with hoists or power cranes.

Tilt-up is adaptable to a wide range of uses and architectural effects. It is speedy, economical construction for almost any type of building.

Concrete tilt-up structures can be designed to conform with building codes. They're fire-safe, decayproof, easily maintained and serve a lifetime at **low annual cost** under exposure to any anticipated forces, climates or conditions of use.

For more information get your free copy of a 32-page, illustrated booklet, "Tilt-up Construction." Distributed only in the U. S. and Canada.

PORTLAND CEMENT ASSOCIATION
 A national organization to improve and extend the uses of portland cement and concrete through scientific research and engineering field work
 50 W. Broad St., Columbus 15, Ohio

14 THE MARCH 1954 OHIO ARCHITECT

Plate B31. Advertisement in Ohio Architect, March 1954 for tilt-up concrete by the Portland Cement Association, Columbus, Ohio.

The Cleveland Quarries Company
 produces

- Architectural Cut Stone
- Sawed Building Sandstone
- Sandstone Ashlar Facing
- Natural Sandstone Flagging
- Berea Sandstone Curbing
- Breakwater Stone
- Crushed Stone
- Silica Sand

St. Michael's R. C. Church
 Independence, Ohio
 Architect: Anthony S. Cirese
 Cleveland, Ohio

Amherst SANDSTONE
 BUILDING STONE DEPARTMENT
 THE CLEVELAND QUARRIES COMPANY
 Amherst, Ohio

Plate B32. Advertisement in Ohio Architect, August 1957 for Amherst Sandstone by the Cleveland Quarries Company, Amherst, Ohio



Plate B33. Ca. 1970 view of Woolco Store parking lot and façade at Graceland Shopping Center in Clintonville (Pleasant Family Shopping 2009).



Plate B34. Aerial View of O'Neil-Sheffield Shopping Center, Elyria, Ohio In Ohio Architect, August 1995 by architects Weinberg and Teare.



Plate B35. Logo signage in ca. 1970 at Graceland Shopping Center in Clintonville (Campbell 2008).

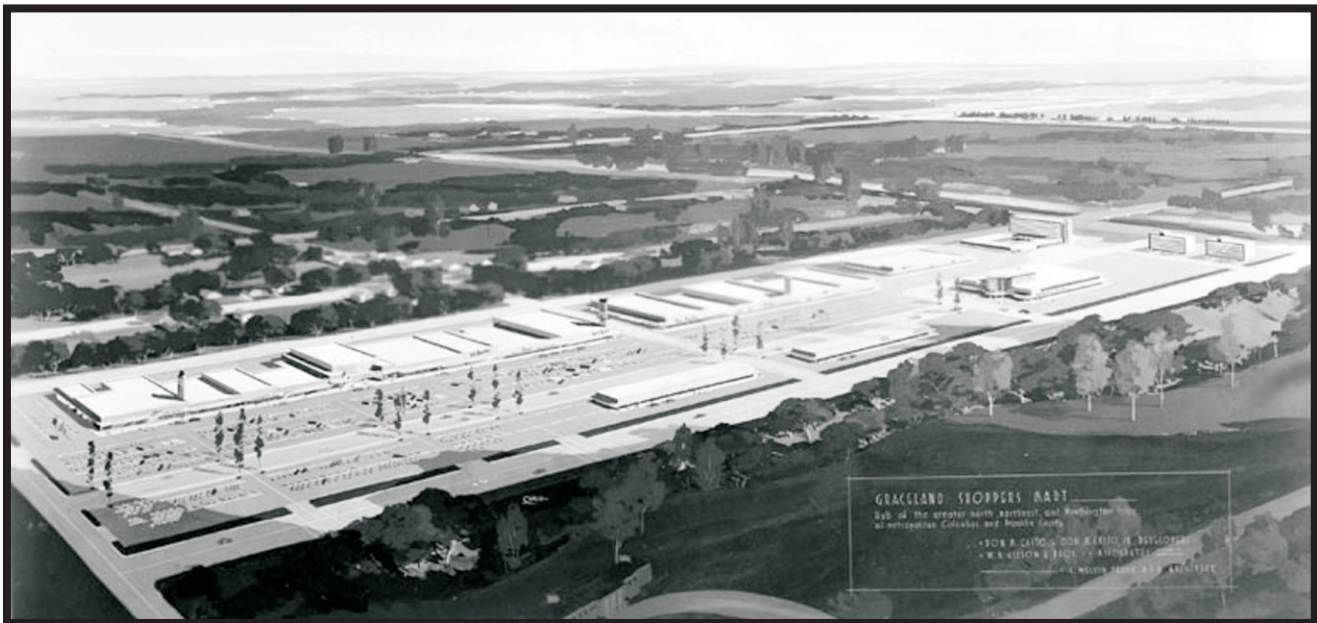


Plate B36. Architect Melvin C. Frank's ca. 1953 rendering for Graceland Shopping Center in Clintonville (Campbell 2008).



Plate B37. Aerial view of Graceland Shopping Center in Clintonville nearing completion in 1954, taken from the Citizen Journal Photo Archives at the Grandview Public Library, Grandview, Ohio (Campbell 2008).

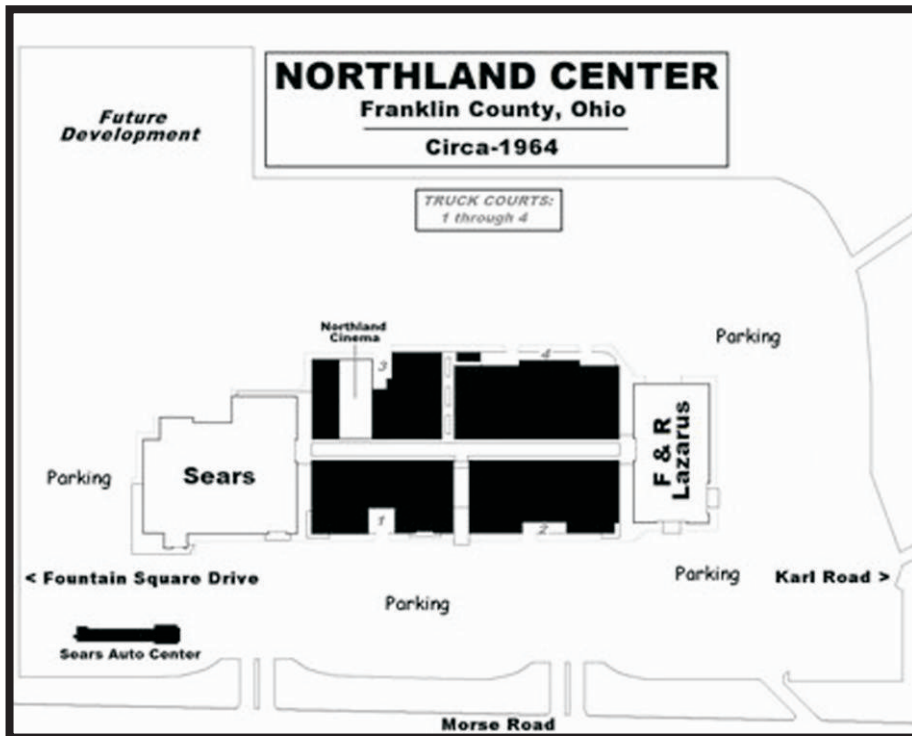


Plate B38. Ca. 1964 site plan for Northland Shopping Mall near Columbus (Mall Hall of Fame 2008a).



Plate B39. Ca. 1970 photograph of the modernist Sears façade at Northland Shopping Mall near Columbus (Mall Hall of Fame 2008a).

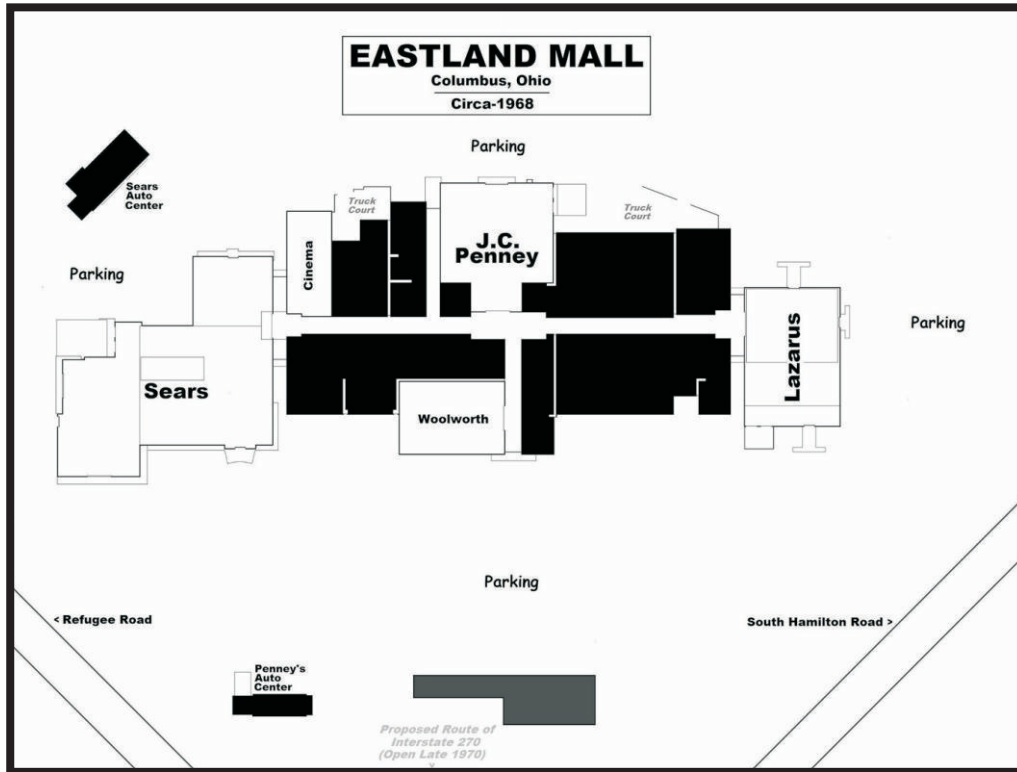


Plate B40. Ca. 1968 site plan for Eastland Mall near Columbus (Mall Hall of Fame 2008a).



Plate B41. Undated aerial photograph of Eastland Mall near Columbus (Mall Hall of Fame 2008a).

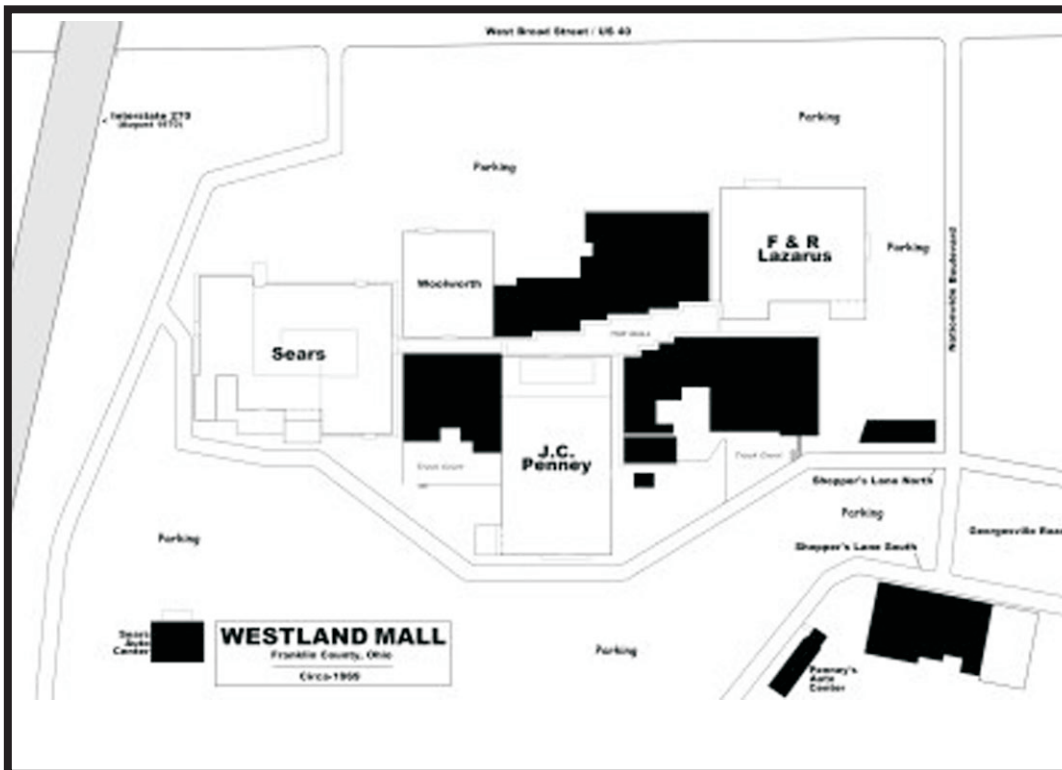


Plate B42. Ca. 1969 site plan for Westland Shopping Mall near Columbus (Mall Hall of Fame 2008a).



Plate B43. Ca. 1962, one-story, two-storefront building at 13234-13238 Cedar Road in Cleveland Heights. (Showcase.com, 2010)



Plate B44. N. Court Street in downtown Medina in ca. 1961. (Cleveland State University, Michael Schwartz Library Special Collection, the Cleveland Press Collection, Cleveland Memory Project 2010).



Plate B45. Ca. 1955, International-style former bank at
11173 Reading Road in Cincinnati.
(Gray & Pape, Inc.)



Plate B46. Libbey-Owens-Ford headquarters building, completed in 1960,
at 811 Madison Street in downtown Toledo
(University of Toledo Libraries Canaday Center 2007a).



Plate B47. Fiberglass Tower, completed in 1969, at 200 N. St. Clair Street in downtown Toledo (Skyscraper City 2010).



Plate B48. 1969 Aerial View of Steel Truss Bridge in Cuyahoga County (ODOT Photo Archive 2010e).



Plate B49. 1969 Aerial View of Cuyahoga County Interstate (ODOT Photo Archive 2010f).



Plate B50. 1969 Bridge work in Akron (ODOT Photo Archive 2010g).



Plate B51. Aerial view of Cincinnati in 1973 (ODOT Photo Archive 2010h).



Plate B52. I-270 in Franklin County on June 23, 1970 (ODOT Photo Archive 2010i).

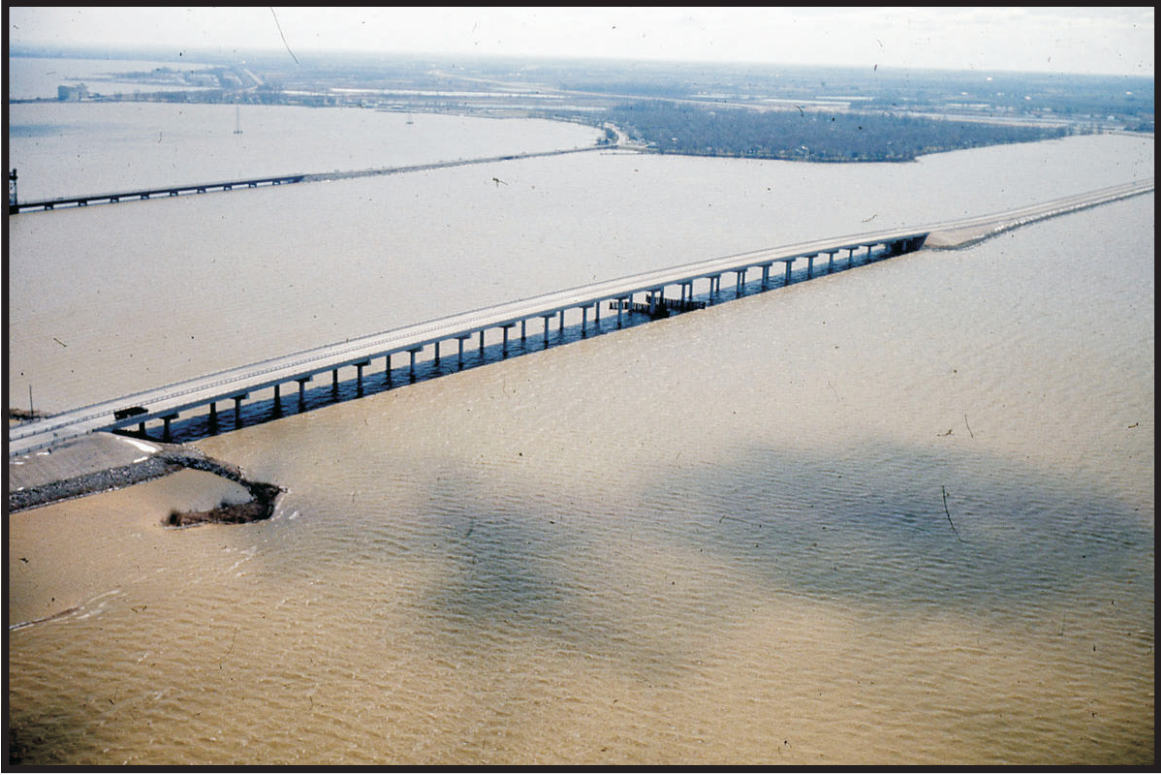


Plate B53. Ca. 1966 view of Sandusky Bay Bridge (ODOT Photo Archive 2010j).



Plate B54. Ross County Bridge on US 50 in 1965 (ODOT Photo Archive 2010k).



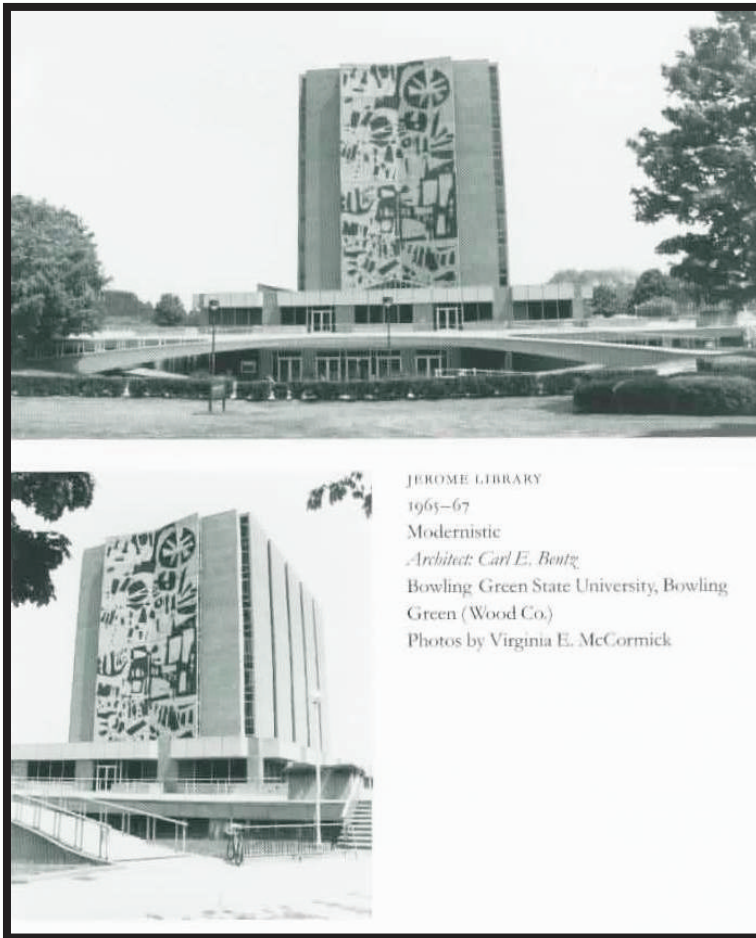
Plate B55. Athens County Bridge in 1961 (ODOT Photo Archive 2010).



Plate B56. Ca. 1964 Tower at Erieview at 1801 E. 9th Street, an urban renewal project in downtown Cleveland. (Shawn Hoefler, Clevelandskyscrapers.com, 2010)



Plate B57. Site of the 1970 shootings at Kent State University, now listed in the National Register of Historic Places (Seeman et al. 2008).



JEROME LIBRARY
 1965-67
 Modernistic
 Architect: Carl E. Bentz
 Bowling Green State University, Bowling
 Green (Wood Co.)
 Photos by Virginia E. McCormick

Plate B58. Ca. 1965-1967 Jerome Library at Bowling Green State University, designed by state architect Carl E. Bentz (McCormick 2001:160).

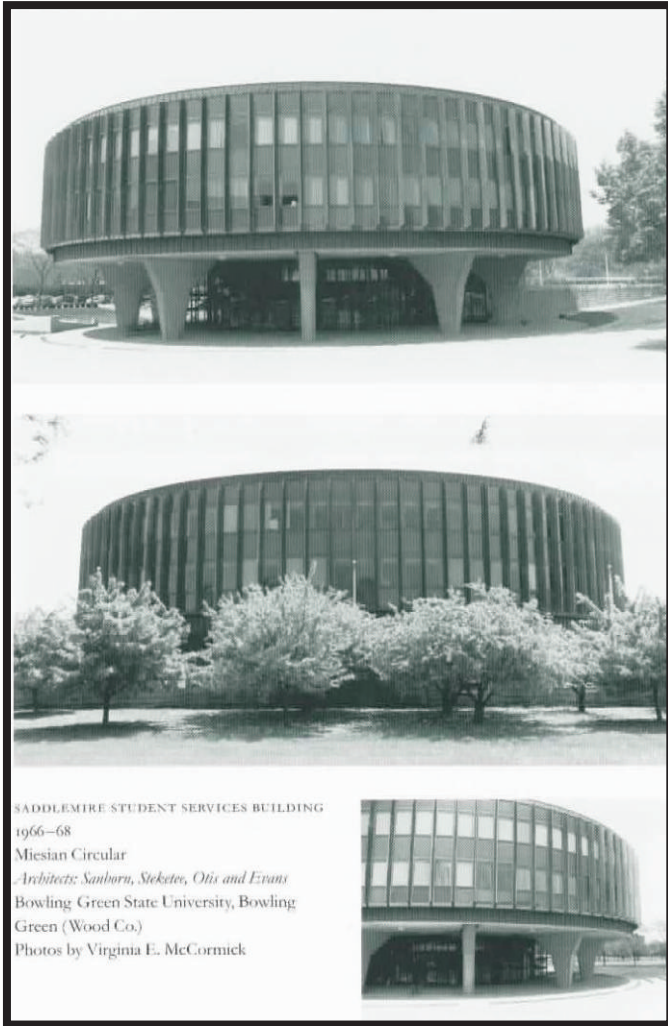


Plate B59. Ca. 1966-1968 SaddleMire Student Services Building at Bowling Green State University, designed by Toledo architects Sanborn, Steketee, Otis & Evans (McCormick 2001:161).

VISIT THE BLANDFORD . . .
**THE NEWEST NEW HOME
IN WORTHINGTON**

BUILT BY
Betts
BUILT
homes
inc.

When you invest in a Betts Built Home, you are guaranteed quality construction and expert craftsmanship found only in the finest custom-built homes. Plans are imaginative, distinctive and functional. Here are only a few of the exceptional features for good living found in the Blandford.

- 4 Bedrooms with tremendous closet space
- 2½ Baths, with vanities (master bath has double vanity)
- Den or Family room with fireplace
- Beautiful kitchen with eating area, built-ins and illuminated ceiling
- 2-Car attached garage, full divided basement and many other extras too numerous to mention.

Model home is located on the corner of Rieber and Lambourne in Worthington Estates. Watch for Betts signs.

**CALL 885-0682
for additional information**

Plate B60. Advertisement by Betts Built Homes, Inc., for new housing construction in Worthington (Campbell 2010a).

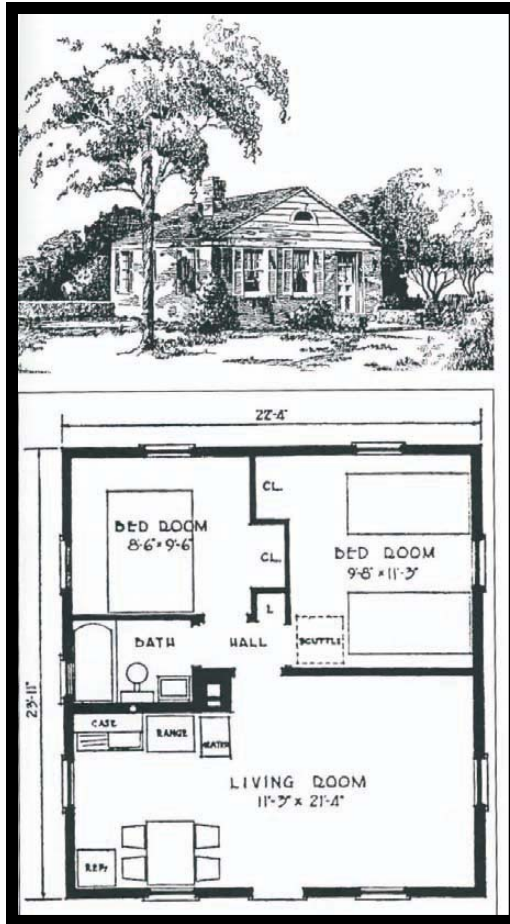


Plate B61. House Type A Elevation and Floor Plan published by the Federal Housing Administration in 1936 (Ames and McClelland 2002:61).



Plate B62. Ca. 1947 Cape Cod house in Bloomfield. (Gray and Pape, Inc.)



Plate B63. Ca. 1967 ranch house in New Lebanon.
(Gray and Pape, Inc.)



Plate B64. Ca. 1965 split level house in Columbus.
(Gray and Pape, Inc.)



Plate B65. Ca. 1960 split level house in Oxford.
(Gray and Pape, Inc.)



Plate B66. Ca. 1965 William and J. Preston Levis Development Park in Perrysburg
(University of Toledo Libraries Canaday Center 2007b).



Plate B67. Ca. 1962 Light Industrial Building at 835 Sharon Drive, Westlake (Showcase.com 2010a).

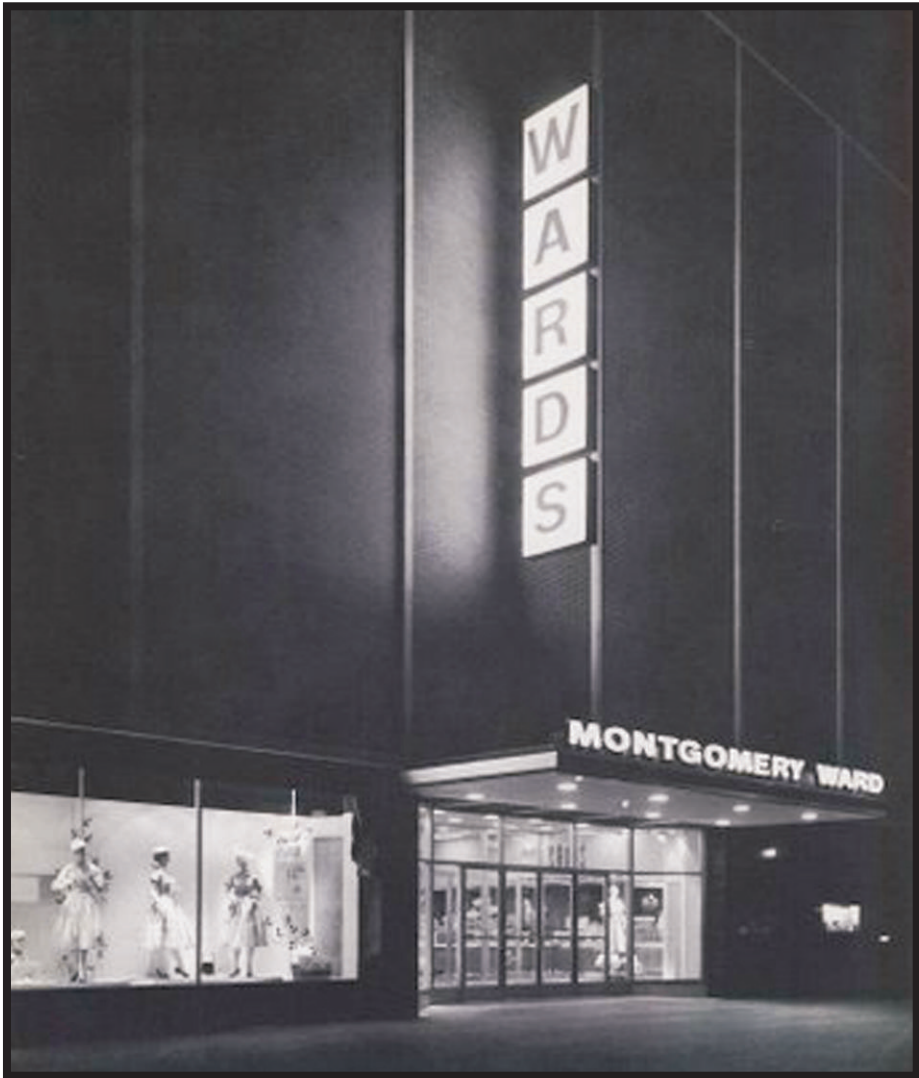


Plate B68. Ca. 1957 Montgomery Ward's building Portsmouth (Pleasant Family Shopping 2009).



Plate B69. Ca. 1972 strip shopping center at Bagley Plaza, 404-424 W. Bagley Road, Berea (Showcase.com 2010b).

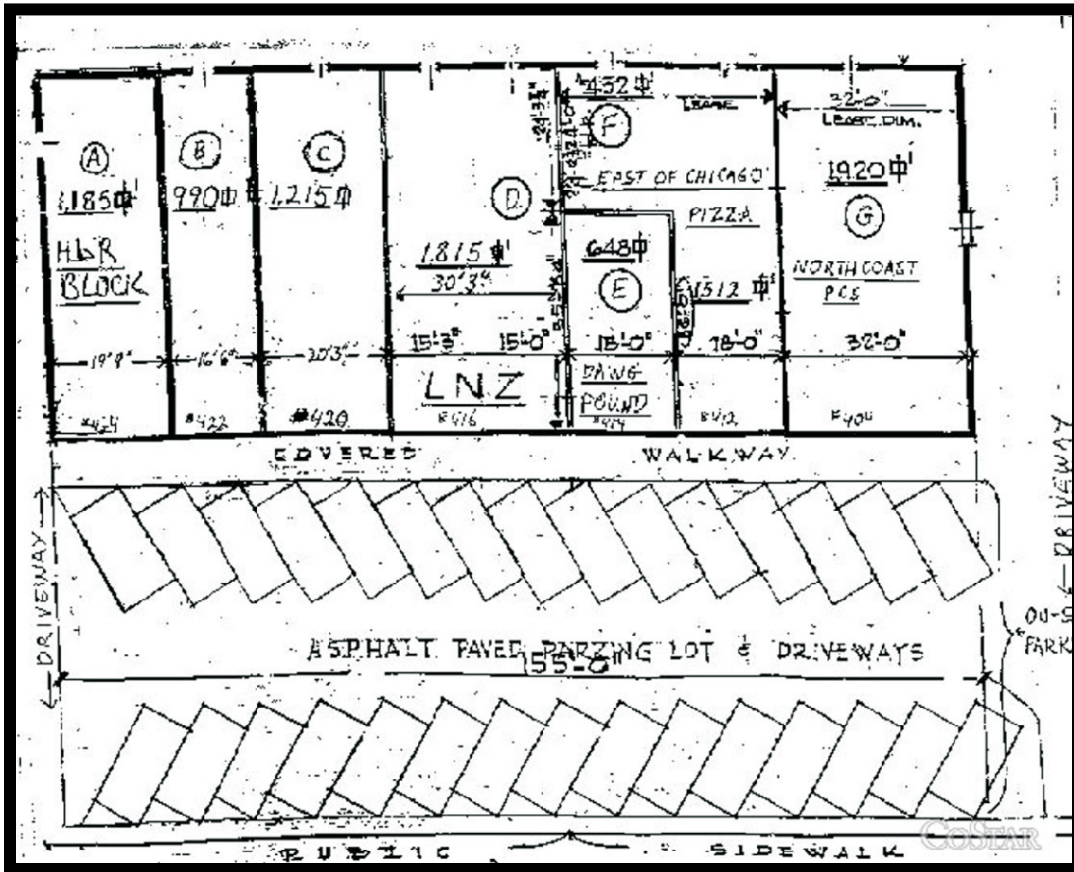


Plate B70. Site plan for ca. 1972 strip shopping center at Bagley Plaza, 404-424 W. Bagley Road, Berea (Showcase.com 2010b).

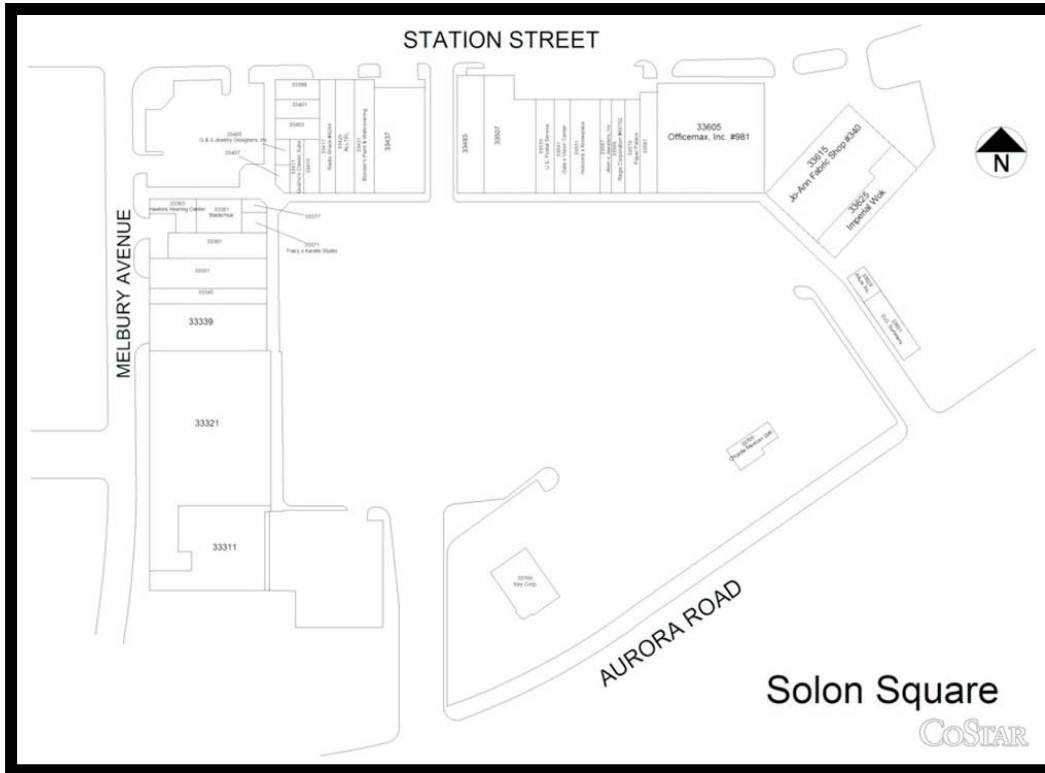


Plate B71. Site plan for ca. 1958 strip shopping center at 33311-33631 Aurora Road, Solon (Showcase.com 2010c).



Plate B72. Ca. 1958 strip shopping center at 33311-33631 Aurora Road, Solon (Showcase.com 2010c).

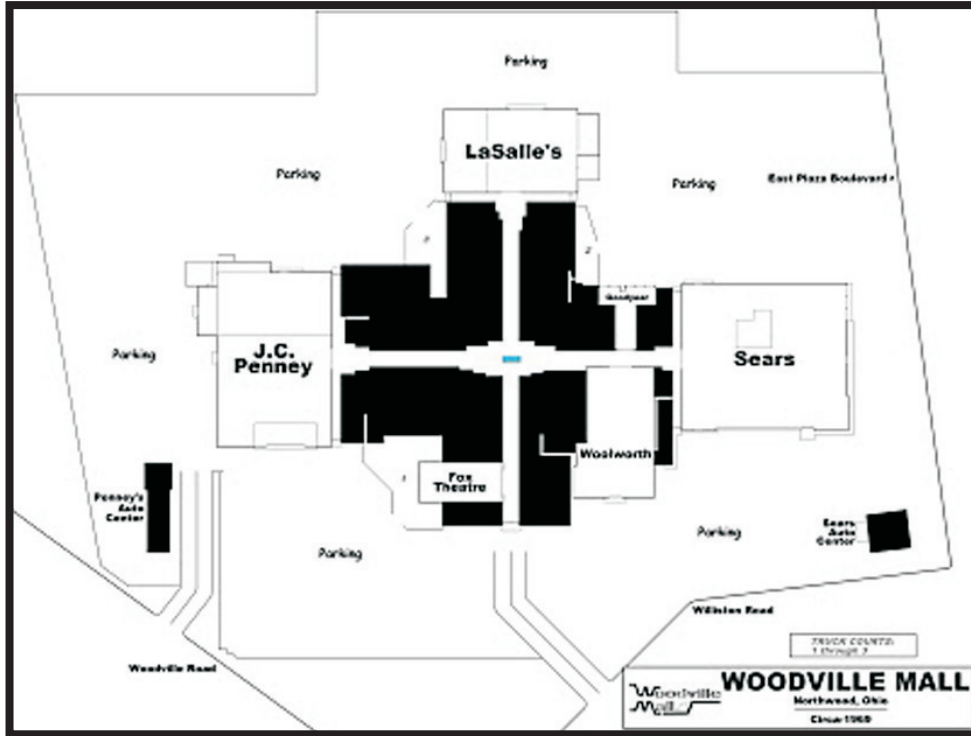


Plate B73. Site plan for Woodville Mall in Northwood (Mall Hall of Fame 2008b).



Plate B74. The Christopher Inn, 300 E. Broad Street, Columbus (Campbell 2010b).



Plate B75. Kahiki Restaurant, Columbus, Ca. 1965 Postcard (Humuhumu's Critiki 2010).

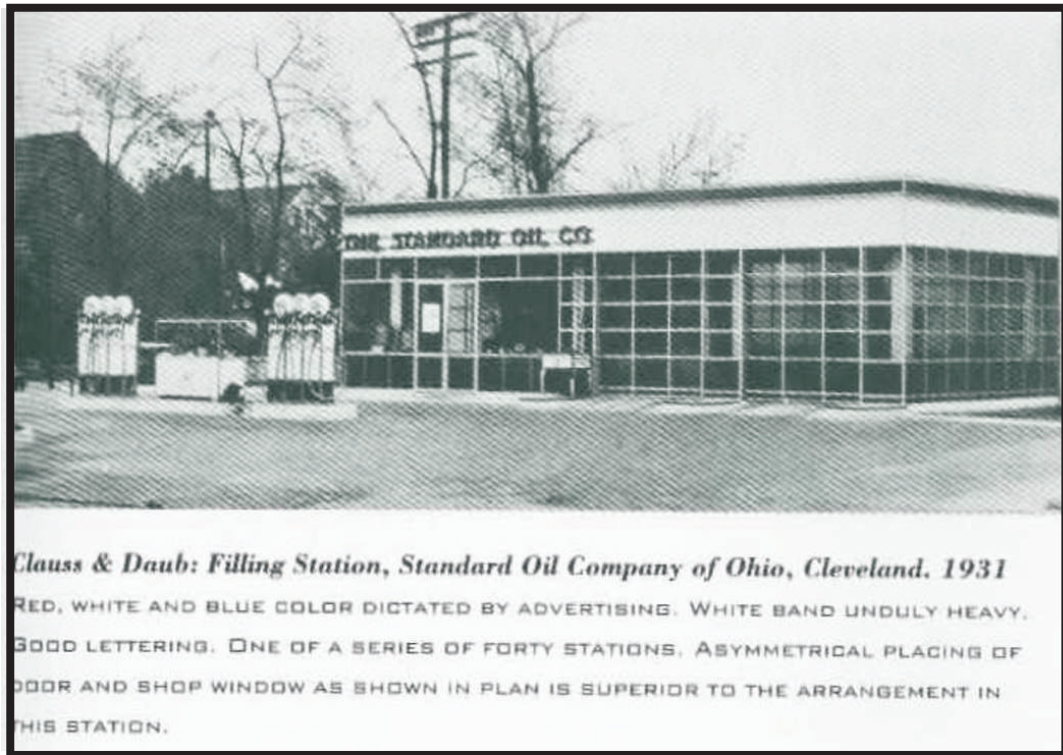


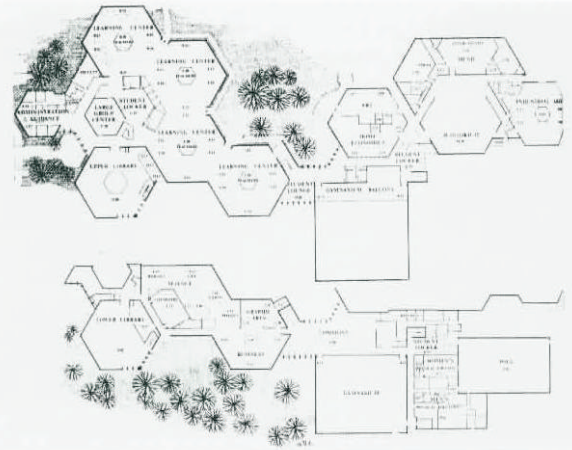
Plate B76. Representative example of Sohio Gas Station (Hitchcock and Johnson 1995:121).



BUTTERNUT ELEMENTARY SCHOOL
1969
Open-Space Modern
Architects: Perkins and Will, and Lesko Associates,
Architects and Planners
North Olmsted (Cuyahoga Co.)
Courtesy of Lesko Associates, Architects
and Planners

Floor plan showing graded classroom
clusters
Courtesy of Lesko Associates, Architects
and Planners

Plate B77. Ca. 1969 Butternut Elementary School in
North Olmsted (McCormick 2001:78).



MARIEMONT HIGH SCHOOL
1969
Modular
Architects: Baster, Hodell, Donnelly and Preston
Mariemont (Hamilton Co.)
Photo by Virginia E. McCormick

Plan shows open-space learning cores and
environmental adaptation to the wooded
hillside site.
Site floor plan from *Open-Space Schools*

Plate B78. Ca. 1969 Mariemont High School, designed by
Jack E. Hodell (McCormick 2001: 116).



Plate B79. Robinson Lab at Ohio State University in 1961
(The Ohio State University Photo Archives 2010).



Plate B80. Morrill and Lincoln Tower construction at Ohio State University in 1966
(The Ohio State University Photo Archives 2010).

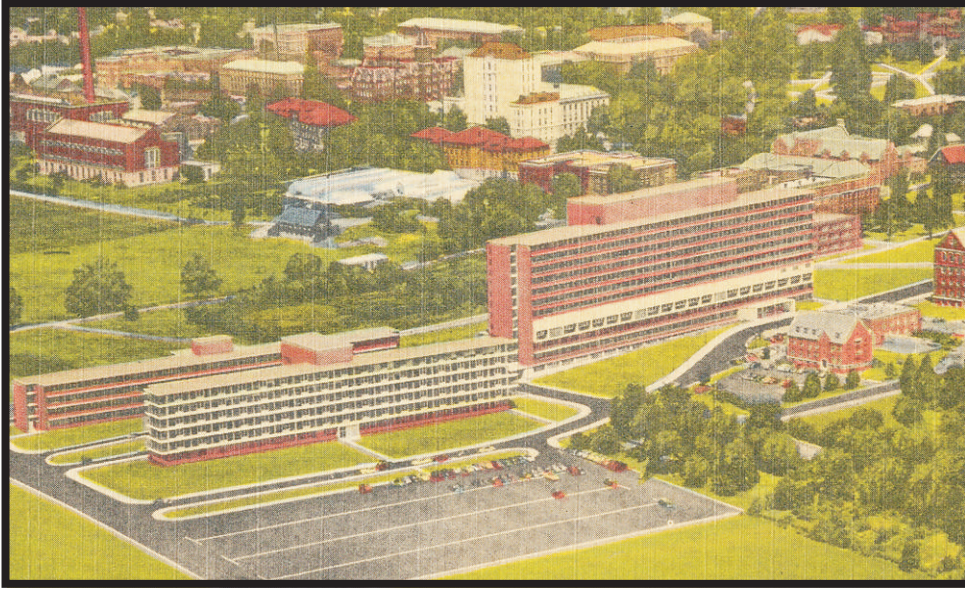


Plate B81. Ca. 1951 Ohio State University Hospital, 775 Park Street, Columbus (Campbell 2010c).

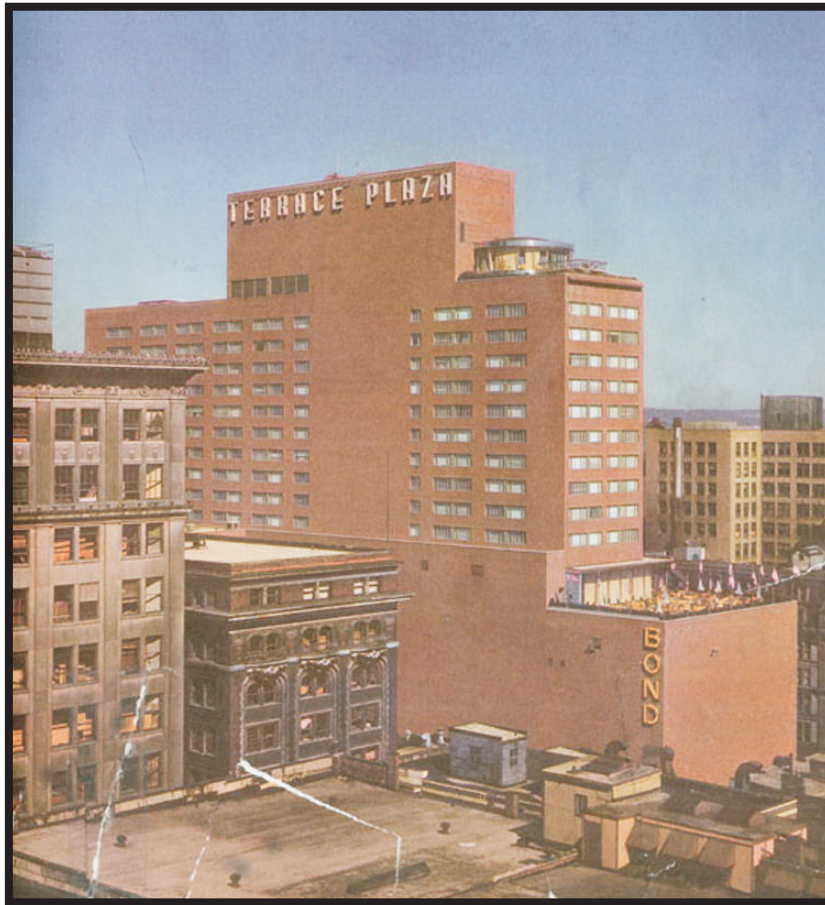


Plate B82. Ca. 1950 view of the Terrace Plaza Hotel, Cincinnati (Fein 2009).



Plate B83. Andrews Library at College of Wooster (CardCow.com 2010).



Plate B84. Richland County Courthouse, Mansfield (Rootsweb.com 2010).

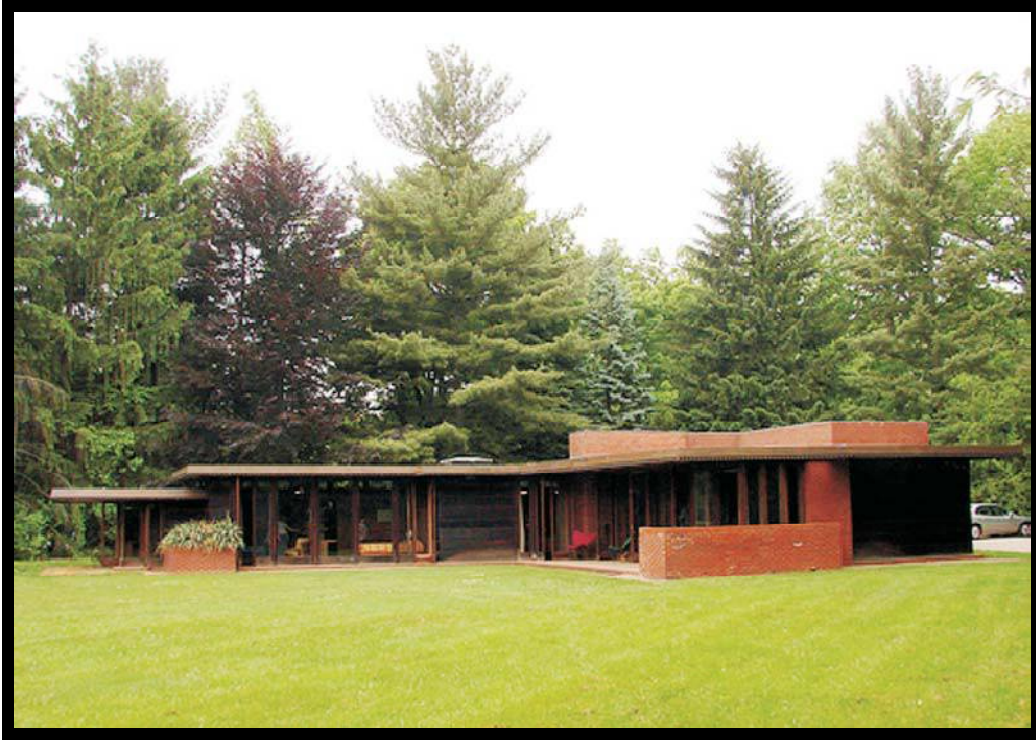


Plate B85. 1948-1949 Weltzheimer/Johnson House, Oberlin
(Wikipedia 2010, Oberlin College, Allen Memorial Art Museum.)

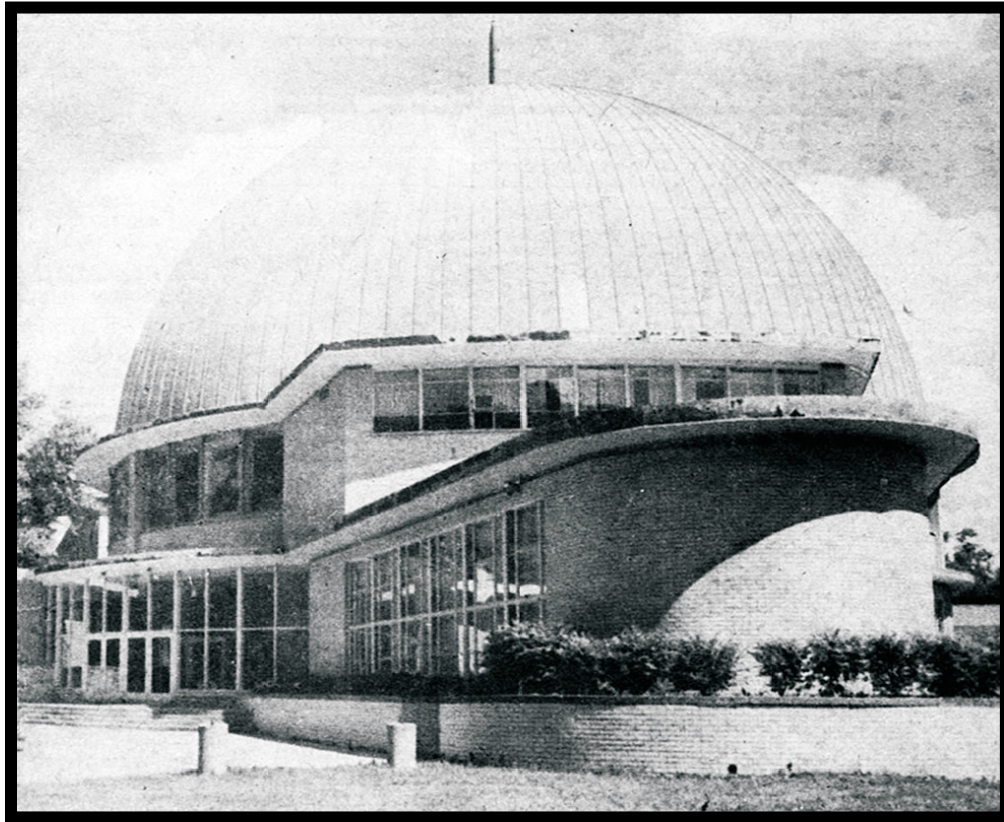


Plate B86. 1949-1950 Park Synagogue, Cleveland Heights (Goldberg 1986).



Plate B87, 1966-1970 Ohio Historical Society (Ohio Historical Society, Archives Library).



Plate B88. White Tower restaurant, Dayton (Jackie and Sculle 1999:38).



Plate B89. Frisch's Big Boy restaurant sign, Columbus (Dipity.com 2010).



Plate B90. Ca. 1959 East Ohio Building at 1717 East Ninth Street, Cleveland (Shawn Hoefler, ClevelandSkyscrapers.com, 2010)



Plate B91. Ca. 1968 office building at 5 Severance Circle, Cleveland Heights (Showcase.com 2010d).

for beautiful accent walls...

New Durasan, the first vinyl-surfaced gypsum wallboard

EXCLUSIVE

There's no better looking wall surface than Gold Bond's new Durasan. Its five glamorous colors and richly textured finish make it a beautiful part of any room in the house. Durasan® is as practical as it is beautiful. The vinyl plastic surface is completely child-proof: it won't scuff, crack or chip, and can be washed with soap and water. Durasan cuts finishing costs because it goes up fast, needs no additional finishing of any kind. Ask your Gold Bond® Representative or write Dept. AB-860 for free samples and literature.

NATIONAL GYPSUM COMPANY, BUFFALO 13, NEW YORK

Gold Bond
BUILDING PRODUCTS

a step ahead of tomorrow

AMERICAN BUILDER, published monthly by Simmons-Brookman Publishing Corp., Emmett Street, Bristol, Connecticut. Second class postage paid at Bristol, Connecticut. Subscription rates: U.S., Possessions and Canada, \$3.50 for one year, \$7.00 for three years, August issue, Volume 52, No. 8. Subscriptions correspondence to AMERICAN BUILDER, Emmett Street, Bristol, Connecticut.

Plate B92. Ca. 1960 advertisement for Gold Bond vinyl-surfaced gypsum wallboard (Retro Renovation 2010b).

Homes sell faster with

**PLATEBOARD®
GLAMOR WALLS**

For less than \$20.00 material cost you can easily erect a 12' x 8' PLATEBOARD Wood-Grain finish Glamor Wall to give a home that Luxury Look.

Do you know about Abitibi's builder-proven "Personalized" model home promotion program that will help sell your homes faster? Write us today.

Abitibi Better building products through research in wood chemistry.
 ABITIBI CORPORATION General Sales Office—Detroit 26, Michigan • Manufacturing Plant—Alpena, Michigan

Oak Autumn Walnut Natural Walnut Platinum Walnut

Plate B93. Ca. 1960 advertisement for wood grain finished wallboard (Retro Renovation 2010b).



Plate B94. 1952-1953 Park of Roses at 3923 North High Street, Columbus (Columbus Recreation and Parks Department 2010).



Plate B95. American Rose Society Headquarters at Park of Roses, Columbus (Campbell 2010d).